

Product datasheet for **AP12850PU-N**

MAP4K4 pSer629 Rabbit Polyclonal Antibody

Product data:

Product Type:	Primary Antibodies
Recommended Dilution:	ELISA: 1/1,000. Dot Blot: 1/500.
Reactivity:	Human
Host:	Rabbit
Isotype:	Ig
Clonality:	Polyclonal
Immunogen:	This antibody is generated from rabbits immunized with a KLH conjugated synthetic phosphopeptide corresponding to amino acid residues surrounding S629 of human MAP4K4.
Specificity:	This antibody detects MAP4K4 pSer629.
Formulation:	PBS with 0.09% (W/V) Sodium Azide as preservative. State: Aff - Purified State: Liquid purified Ig fraction.
Concentration:	lot specific
Purification:	Protein A Affinity Chromatography. Then, the antibody fraction is peptide affinity purified in a 2-step procedure with peptides. The antibody is eluted with high and low pH buffers and neutralized immediately, followed by dialysis against PBS.
Conjugation:	Unconjugated
Storage:	Store the antibody undiluted at 2-8°C for one month or (in aliquots) at -20°C for longer. Avoid repeated freezing and thawing.
Stability:	Shelf life: one year from despatch.
Gene Name:	mitogen-activated protein kinase kinase kinase kinase 4
Database Link:	Entrez Gene 9448 Human O95819



[View online »](#)

Background:

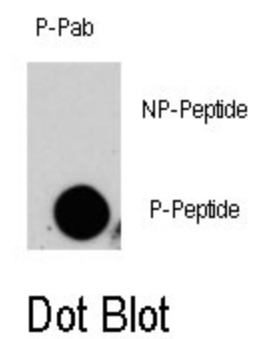
MAP4K4, a member of the STE20 subfamily of Ser/Thr protein kinases, may play a role in the response to environmental stress and cytokines such as TNF-alpha. It appears to act upstream of the JUN N-terminal pathway. This protein is thought to interact with the SH3 domain of the adapter proteins Nck. HGK binds, via its CNH regulatory domain, to the N-terminal region of SPG3A. Expression appears to be ubiquitous, expressed in all tissue types examined. Isoform 5 appears to be more abundant in the brain, and isoform 4 is predominant in the liver, skeletal muscle and placenta.

Synonyms:

MEKKK 4, MAPK/ERK kinase kinase 4, NIK

Note:

Molecular weight: 142100 Da

Product images:

Dot blot analysis of anti-MAP4K4-pSer629 Phospho-specific Pab (Cat.#AP12850PU-N) on nitrocellulose membrane. 50ng of Phospho-peptide or Non Phospho-peptide per dot were adsorbed. Antibody working concentrations are 0.5ug per ml.