

Product datasheet for **AP12828PU-N**

B Raf (BRAF) pThr598 Rabbit Polyclonal Antibody

Product data:

Product Type:	Primary Antibodies
Recommended Dilution:	ELISA: 1/1,000. Dot Blot: 1/100-1/500.
Reactivity:	Human
Host:	Rabbit
Isotype:	Ig
Clonality:	Polyclonal
Immunogen:	This antibody is generated from rabbits immunized with a KLH conjugated synthetic phosphopeptide corresponding to amino acid residues surrounding T598 of human BRAF.
Specificity:	This antibody detects BRAF pThr598. Predicted to cross react with Mouse (100% Antigen Homology).
Formulation:	PBS with 0.09% (W/V) Sodium Azide as preservative. State: Aff - Purified State: Liquid purified Ig fraction.
Concentration:	lot specific
Purification:	Protein A Affinity Chromatography. Then, the antibody fraction is peptide affinity purified in a 2-step procedure with peptides. The antibody is eluted with high and low pH buffers and neutralized immediately, followed by dialysis against PBS.
Conjugation:	Unconjugated
Storage:	Store the antibody undiluted at 2-8°C for one month or (in aliquots) at -20°C for longer. Avoid repeated freezing and thawing.
Stability:	Shelf life: one year from despatch.
Gene Name:	B-Raf proto-oncogene, serine/threonine kinase
Database Link:	Entrez Gene 673 Human P15056



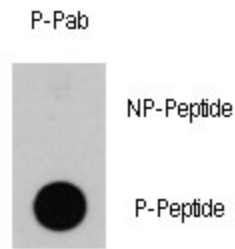
[View online »](#)

Background: BRAF is involved in the transduction of mitogenic signals from the cell membrane to the nucleus. It may play a role in the postsynaptic responses of hippocampal neuron. Defects in BRAF are a cause of cardiofaciocutaneous syndrome (CFC syndrome), and a wide range of cancers such as lung cancer, non-Hodgkins lymphoma, and colorectal cancer.

Synonyms: BRAF, BRAF1, RAFB1, p94

Note: **Molecular weight:** 84437 Da

Product images:



Dot blot analysis of anti-BRAF-pT598 Phospho-specific Pab (Cat.#AP12828PU-N) on nitrocellulose membrane. 50ng of Phospho-peptide or Non Phospho-peptide per dot were adsorbed. Antibody working concentrations are 0.5ug per ml.

Dot Blot