

## Product datasheet for **AP12796PU-N**

### **TAK1 (MAP3K7) pSer192 Rabbit Polyclonal Antibody**

#### **Product data:**

Product Type:	Primary Antibodies
Recommended Dilution:	<b>Dot Blot:</b> 1/100-1/500.
Reactivity:	Bovine, Human, Mouse, Rat
Host:	Rabbit
Isotype:	Ig
Clonality:	Polyclonal
Immunogen:	KLH conjugated synthetic phosphopeptide corresponding to amino acid residues surrounding Ser192 of Human MAP3K7.
Specificity:	This antibody detects TAK1 / MAP3K7 pSer192.
Formulation:	PBS State: Aff - Purified State: Liquid purified Ig fraction Preservative: 0.09% (W/V) Sodium Azide
Concentration:	lot specific
Purification:	Protein A Chromatography followed by two-step phosphospecific peptide affinity purification
Conjugation:	Unconjugated
Storage:	Store the antibody undiluted at 2-8°C for one month or (in aliquots) at -20°C for longer. Avoid repeated freezing and thawing.
Stability:	Shelf life: one year from despatch.
Gene Name:	mitogen-activated protein kinase kinase kinase 7
Database Link:	<a href="#">Entrez Gene 6885 Human O43318</a>



[View online »](#)

**Background:**

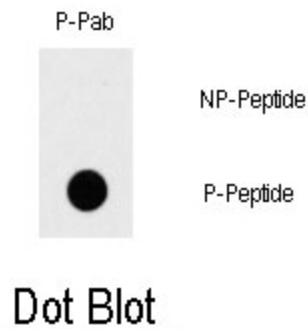
MAP3K7 is a member of the serine/threonine protein kinase family. This kinase mediates the signaling transduction induced by TGF beta and morphogenetic protein (BMP), and controls a variety of cell functions including transcription regulation and apoptosis. In response to IL-1, this protein forms a kinase complex including TRAF6, MAP3K7P1/TAB1 and MAP3K7P2/TAB2; this complex is required for the activation of nuclear factor kappa B. This kinase can also activate MAPK8/JNK, MAP2K4/MKK4, and thus plays a role in the cell response to environmental stresses.

**Synonyms:**

TAK1, TGF-beta-activated kinase 1, TAK-1

**Note:**

**Molecular weight:** 67196 Da

**Product images:**

Dot blot analysis of Phospho-MAP3K7-Ser192 polyclonal antibody on nitrocellulose membrane. 50ng of Phospho-peptide or Non Phospho-peptide per dot were adsorbed. Antibody working concentration was 0.5 ug per ml. P-Pab: Phospho-antibody. P-Peptide: Phospho-peptide. NP-Peptide: Non-Phospho-peptide.