

Product datasheet for **AP12788PU-N**

AKT2 pSer474 Rabbit Polyclonal Antibody

Product data:

| | |
|------------------------------|---|
| Product Type: | Primary Antibodies |
| Recommended Dilution: | ELISA: 1/1,000. Dot Blot: 1/100-1/500. |
| Reactivity: | Human |
| Host: | Rabbit |
| Isotype: | Ig |
| Clonality: | Polyclonal |
| Immunogen: | This antibody is generated from rabbits immunized with a KLH conjugated synthetic phosphopeptide corresponding to amino acid residues surrounding Ser474 of human AKT2. |
| Specificity: | This antibody detects AKT2 / PKB beta pSer474. |
| Formulation: | PBS with 0.09% (W/V) Sodium Azide as preservative. State: Aff - Purified State: Liquid purified Ig fraction. |
| Concentration: | lot specific |
| Purification: | Protein A Chromatography followed by two-step phosphospecific peptide affinity purification. |
| Conjugation: | Unconjugated |
| Storage: | Store the antibody undiluted at 2-8°C for one month or (in aliquots) at -20°C for longer. Avoid repeated freezing and thawing. |
| Stability: | Shelf life: one year from despatch. |
| Gene Name: | AKT serine/threonine kinase 2 |
| Database Link: | Entrez Gene 208 Human P31751 |
| Background: | AKT2 is a putative oncogene encoding a protein belonging to a subfamily of serine/threonine kinases containing SH2-like (Src homology 2-like) domains. Furthermore, AKT2 was shown to be amplified and overexpressed in 2 of 8 ovarian carcinoma cell lines and 2 of 15 primary ovarian tumors. Overexpression of AKT2 contributes to the malignant phenotype of a subset of human ductal pancreatic cancers. AKT2 is a general protein kinase capable of phosphorylating several known proteins. |

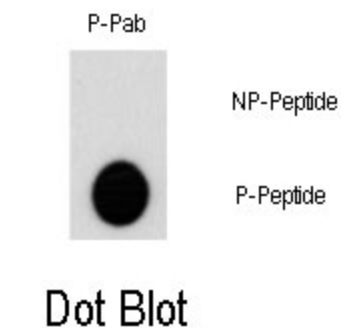


[View online »](#)

Synonyms: RAC-PK-beta, Protein kinase Akt-2, Protein kinase B beta

Note: **Molecular weight:** 55769 Da

Product images:



Dot blot analysis of Phospho-AKT2-S474 polyclonal antibody (Cat#AP12788PU-N) on nitrocellulose membrane. 50ng of Phospho-peptide or Non Phospho-peptide per dot were adsorbed. Antibody working concentration was 0.5ug per ml. P-Pab: phospho-antibody; P-Peptide: phospho-peptide; NP-Peptide: non-phospho-peptide.