

## Product datasheet for **AP12776PU-N**

### MEF2C pThr20 Rabbit Polyclonal Antibody

#### Product data:

Product Type:	Primary Antibodies
Recommended Dilution:	ELISA: 1/1,000. Dot Blot: 1/100-1/500.
Reactivity:	Human
Host:	Rabbit
Isotype:	Ig
Clonality:	Polyclonal
Immunogen:	This antibody is generated from rabbits immunized with a KLH conjugated synthetic phosphopeptide corresponding to amino acid residues surrounding T20 of human MEF2C.
Specificity:	This antibody detects MEF2C pThr20 . Predicted to cross react with Mouse (100% Antigen Homology).
Formulation:	PBS with 0.09% (W/V) Sodium Azide as preservative. State: Aff - Purified State: Liquid purified Ig fraction.
Concentration:	lot specific
Purification:	Protein A Affinity Chromatography. Then, the antibody fraction is peptide affinity purified in a 2-step procedure with peptides. The antibody is eluted with high and low pH buffers and neutralized immediately, followed by dialysis against PBS.
Conjugation:	Unconjugated
Storage:	Store the antibody undiluted at 2-8°C for one month or (in aliquots) at -20°C for longer. Avoid repeated freezing and thawing.
Stability:	Shelf life: one year from despatch.
Gene Name:	myocyte enhancer factor 2C
Database Link:	<a href="#">Entrez Gene 4208 Human Q06413</a>



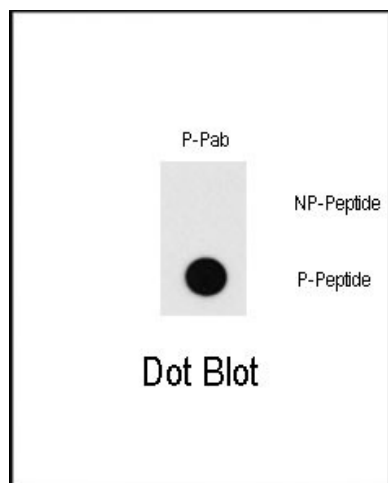
[View online »](#)

**Background:** MEF2C is a transcription activator which binds specifically to the MEF2 element present in the regulatory regions of many muscle-specific genes. This protein controls cardiac morphogenesis and myogenesis, and is also involved in vascular development. It may also be involved in neurogenesis and in the development of cortical architecture.

**Synonyms:** Myocyte-specific enhancer factor 2C

**Note:** **Molecular weight:** 51090 Da

**Product images:**



Dot blot analysis of Phospho-MEF2C-T20 Pab (Cat#AP12776PU-N) on nitrocellulose membrane. 50ng of Phospho-peptide or Non Phospho-peptide per dot were adsorbed. Antibody working concentration was 0.5ug per ml. P-Pab: phospho-antibody; P-Peptide: phospho-peptide; NP-Peptide: non-phospho-peptide.