

Product datasheet for **AP12775PU-N**

TAK1 (MAP3K7) pThr187 Rabbit Polyclonal Antibody

Product data:

Product Type:	Primary Antibodies
Recommended Dilution:	ELISA: 1/1,000. Dot Blot: 1/100-1/500.
Reactivity:	Human
Host:	Rabbit
Isotype:	Ig
Clonality:	Polyclonal
Immunogen:	This antibody is generated from rabbits immunized with a KLH conjugated synthetic phosphopeptide corresponding to amino acid residues surrounding Thr187 of human MAP3K7.
Specificity:	This antibody detects MAP3K7 pThr187. Predicted to cross react with Mouse (100% Antigen Homology).
Formulation:	PBS with 0.09% (W/V) Sodium Azide as preservative. State: Aff - Purified State: Liquid purified Ig fraction.
Concentration:	lot specific
Purification:	Protein A Affinity Chromatography. Then, the antibody fraction is peptide affinity purified in a 2-step procedure with peptides. The antibody is eluted with high and low pH buffers and neutralized immediately, followed by dialysis against PBS.
Conjugation:	Unconjugated
Storage:	Store the antibody undiluted at 2-8°C for one month or (in aliquots) at -20°C for longer. Avoid repeated freezing and thawing.
Stability:	Shelf life: one year from despatch.
Gene Name:	mitogen-activated protein kinase kinase kinase 7
Database Link:	Entrez Gene 6885 Human O43318



[View online »](#)

Background:

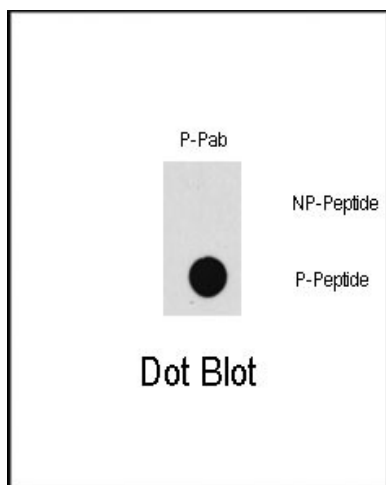
MAP3K7 is a member of the serine/threonine protein kinase family. This kinase mediates the signaling transduction induced by TGF beta and morphogenetic protein (BMP), and controls a variety of cell functions including transcription regulation and apoptosis. In response to IL-1, this protein forms a kinase complex including TRAF6, MAP3K7P1/TAB1 and MAP3K7P2/TAB2; this complex is required for the activation of nuclear factor kappa B. This kinase can also activate MAPK8/JNK, MAP2K4/MKK4, and thus plays a role in the cell response to environmental stresses.

Synonyms:

TAK1, TGF-beta-activated kinase 1, TAK-1

Note:

Molecular weight: 64099 Da

Product images:

Dot blot analysis of Phospho-MAP3K7-Thr187 polyclonal antibody (Cat#AP12775PU-N) on nitrocellulose membrane. 50ng of Phospho-peptide or Non Phospho-peptide per dot were adsorbed. Antibody working concentration were 0.5ug per ml.