

Product datasheet for **AP12756PU-N**

p38 (CRK) pSer41 Rabbit Polyclonal Antibody

Product data:

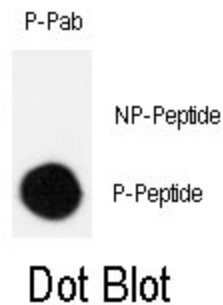
Product Type:	Primary Antibodies
Recommended Dilution:	ELISA: 1/1,000. Dot Blot: 1/500.
Reactivity:	Human
Host:	Rabbit
Isotype:	Ig
Clonality:	Polyclonal
Immunogen:	This antibody is generated from rabbits immunized with a KLH conjugated synthetic phosphopeptide corresponding to amino acid residues surrounding S41 of human CRK.
Specificity:	This antibody detects CRK pSer41. Predicted to cross react with Mouse (100% Antigen Homology).
Formulation:	PBS with 0.09% (W/V) Sodium Azide as preservative. State: Aff - Purified State: Liquid purified Ig fraction.
Concentration:	lot specific
Purification:	Protein A Affinity Chromatography. Then, the antibody fraction is peptide affinity purified in a 2-step procedure with peptides. The antibody is eluted with high and low pH buffers and neutralized immediately, followed by dialysis against PBS.
Conjugation:	Unconjugated
Storage:	Store the antibody undiluted at 2-8°C for one month or (in aliquots) at -20°C for longer. Avoid repeated freezing and thawing.
Stability:	Shelf life: one year from despatch.
Gene Name:	v-crk avian sarcoma virus CT10 oncogene homolog
Database Link:	Entrez Gene 1398 Human P46108



[View online »](#)

Background:	CRK is a member of an adapter protein family that binds to several tyrosine-phosphorylated proteins. It has several SH2 and SH3 domains (src-homology domains) and is involved in several signaling pathways, recruiting cytoplasmic proteins in the vicinity of tyrosine kinase through SH2-phosphotyrosine interaction. The N-terminal SH2 domain of this protein functions as a positive regulator of transformation whereas the C-terminal SH3 domain functions as a negative regulator of transformation.
Synonyms:	Proto-oncogene C-crk, p38
Note:	Molecular weight: 22906 Da
Protein Families:	Druggable Genome, Transcription Factors
Protein Pathways:	Chemokine signaling pathway, Chronic myeloid leukemia, ErbB signaling pathway, Fc gamma R-mediated phagocytosis, Focal adhesion, Insulin signaling pathway, MAPK signaling pathway, Neurotrophin signaling pathway, Pathways in cancer, Regulation of actin cytoskeleton, Renal cell carcinoma

Product images:



Dot blot analysis of Phospho-CRK-S41 polyclonal antibody (Cat#AP12756PU-N) on nitrocellulose membrane. 50ng of Phospho-peptide or Non Phospho-peptide per dot were adsorbed. Antibody working concentration was 0.5ug per ml. P-Pab: phospho-antibody; P-Peptide: phospho-peptide; NP-Peptide: non-phospho-peptide.