

## Product datasheet for **AP12684PU-N**

### Rad9 (RAD9A) pSer272 Rabbit Polyclonal Antibody

#### Product data:

Product Type:	Primary Antibodies
Applications:	IHC, WB
Recommended Dilution:	ELISA: 1/1,000. Western Blot: 1/100-1/500. Immunohistochemistry: 1/50~1/100.
Reactivity:	Human
Host:	Rabbit
Isotype:	Ig
Clonality:	Polyclonal
Immunogen:	This antibody is generated from rabbits immunized with a KLH conjugated synthetic phosphopeptide corresponding to amino acid residues surrounding S272 of human Rad9.
Specificity:	This antibody detects Rad9 pSer272.
Formulation:	PBS with 0.09% (W/V) Sodium Azide as preservative. State: Aff - Purified State: Liquid purified Ig fraction.
Concentration:	lot specific
Purification:	Protein G affinity chromatography. Then, the antibody fraction is peptide affinity purified in a 2-step procedure with control and phosphorylated peptides. The phospho-specific antibody is eluted with high and low pH buffers and neutralized immediately, followed by dialysis against PBS.
Conjugation:	Unconjugated
Storage:	Store the antibody undiluted at 2-8°C for one month or (in aliquots) at -20°C for longer. Avoid repeated freezing and thawing.
Stability:	Shelf life: one year from despatch.
Gene Name:	RAD9 checkpoint clamp component A
Database Link:	<a href="#">Entrez Gene 5883 Human Q99638</a>



[View online »](#)

**Background:**

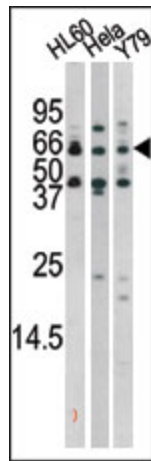
Rad9 is highly similar to *Schizosaccharomyces pombe* rad9, a cell cycle checkpoint protein required for cell cycle arrest and DNA damage repair in response to DNA damage. This protein is found to possess 3' to 5' exonuclease activity, which may contribute to its role in sensing and repairing DNA damage. It forms a checkpoint protein complex with RAD1 and HUS1. This complex is recruited by checkpoint protein RAD17 to the sites of DNA damage, which is thought to be important for triggering the checkpoint-signaling cascade.

**Synonyms:**

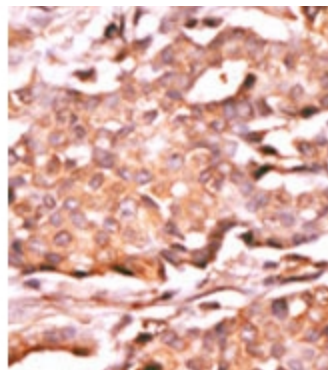
RAD-9A, Cell cycle checkpoint control protein RAD9A, EC=3.1.11.2, DNA repair exonuclease rad9 homolog A

**Note:**

**Molecular weight:** 42547 Da

**Product images:**


The anti-Phospho-Rad9 pSer272 Pab is used in Western blot to detect Phospho-Rad9-S272 in HL60 (left), HeLa (middle), and Y79 (right) tissue lysates.



Formalin-fixed and paraffin-embedded human cancer tissue reacted with the primary antibody, which was peroxidase-conjugated to the secondary antibody, followed by AEC staining. This data demonstrates the use of this antibody for immunohistochemistry; clinical relevance has not been evaluated.