

Product datasheet for **AP12648PU-N**

MET pTyr1356 Rabbit Polyclonal Antibody

Product data:

Product Type:	Primary Antibodies
Applications:	WB
Recommended Dilution:	ELISA: 1/1,000. Western Blot: 1/100-1/500.
Reactivity:	Human
Host:	Rabbit
Isotype:	Ig
Clonality:	Polyclonal
Immunogen:	This antibody is generated from rabbits immunized with 4=4 branches MAPS conjugated synthetic phosphopeptide corresponding to amino acid residues surrounding Y1356 of human MET.
Specificity:	This antibody detects HGF Receptor (MET) pTyr1356.
Formulation:	PBS with 0.09% (W/V) Sodium Azide as preservative. State: Aff - Purified State: Liquid purified Ig fraction.
Concentration:	lot specific
Purification:	Protein G affinity chromatography. Then, the antibody fraction is peptide affinity purified in a 2-step procedure with control and phosphorylated peptides. The phospho-specific antibody is eluted with high and low pH buffers and neutralized immediately, followed by dialysis against PBS.
Conjugation:	Unconjugated
Storage:	Store the antibody undiluted at 2-8°C for one month or (in aliquots) at -20°C for longer. Avoid repeated freezing and thawing.
Stability:	Shelf life: one year from despatch.
Gene Name:	MET proto-oncogene, receptor tyrosine kinase
Database Link:	Entrez Gene 4233 Human P08581



[View online »](#)

Background:

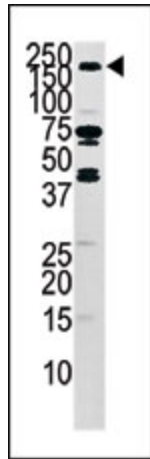
The proto-oncogene MET product is the hepatocyte growth factor receptor and encodes tyrosine-kinase activity. The primary single chain precursor protein is post-translationally cleaved to produce the alpha and beta subunits, which are disulfide linked to form the mature receptor. Various mutations in the MET gene are associated with papillary renal carcinoma.

Synonyms:

Hepatocyte growth factor receptor, MET, Scatter factor receptor, HGF/SF receptor, c-Met

Note:

Molecular weight: 155527 Da

Product images:

Western blot analysis using anti phospho-MET-Tyr1356 Pab to detect phospho-MET pTyr1356 in mouse liver tissue lysate.