

## Product datasheet for **AP12647PU-N**

### **MET pTyr1349 Rabbit Polyclonal Antibody**

#### **Product data:**

Product Type:	Primary Antibodies
Applications:	IHC, WB
Recommended Dilution:	<b>Western Blot:</b> 1/1000 <b>Immunohistochemistry:</b> 1/50~1/100.
Reactivity:	Human
Host:	Rabbit
Isotype:	Ig
Clonality:	Polyclonal
Immunogen:	This antibody is generated from rabbits immunized with a 4=4 Chain MAPS conjugated synthetic phosphopeptide corresponding to amino acid residues surrounding Y1349 of human MET. Synthetic phosphopeptide was selected from region 1345~1357 of human MET.
Specificity:	This antibody detects HGF Receptor (MET) pTyr1349. Predicted to cross react with Mouse and Rabbit (100% Antigen Homology).
Formulation:	PBS with 0.09% (W/V) Sodium Azide as preservative. State: Aff - Purified State: Liquid purified Ig fraction.
Concentration:	lot specific
Purification:	This antibody is purified through a protein A column, followed by peptide affinity purification.
Conjugation:	Unconjugated
Storage:	Store the antibody undiluted at 2-8°C for one month or (in aliquots) at -20°C for longer. Avoid repeated freezing and thawing.
Stability:	Shelf life: one year from despatch.
Gene Name:	MET proto-oncogene, receptor tyrosine kinase
Database Link:	<a href="#">Entrez Gene 4233 Human P08581</a>



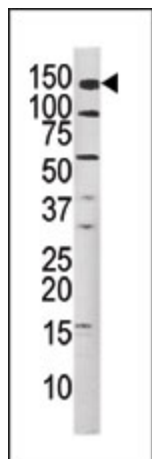
[View online »](#)

**Background:** The proto-oncogene MET product is the hepatocyte growth factor receptor and encodes tyrosine-kinase activity. The primary single chain precursor protein is post-translationally cleaved to produce the alpha and beta subunits, which are disulfide linked to form the mature receptor. Various mutations in the MET gene are associated with papillary renal carcinoma.

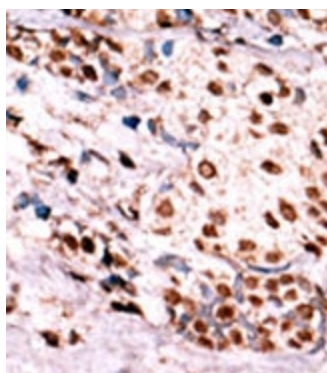
**Synonyms:** Hepatocyte growth factor receptor, MET, Scatter factor receptor, HGF/SF receptor, c-Met

**Note:** **Molecular weight:** 155527 Da

**Product images:**



Western blot analysis using anti-MET pTyr1349 Pab to detect MET-Y1349 in mouse kidney tissue lysate.



Formalin-fixed and paraffin-embedded human cancer tissue reacted with the primary antibody, which was peroxidase-conjugated to the secondary antibody, followed by AEC staining. This data demonstrates the use of this antibody for immunohistochemistry; clinical relevance has not been evaluated.