

## Product datasheet for **AP12640PU-N**

### **MEK1 (MAP2K1) pSer218/221 Rabbit Polyclonal Antibody**

#### **Product data:**

<b>Product Type:</b>	Primary Antibodies
<b>Applications:</b>	IHC, WB
<b>Recommended Dilution:</b>	ELISA: 1/1,000. Western Blot: 1/100-1/500. Dot Blot: 1/500. Immunohistochemistry: 1/50-1/100.
<b>Reactivity:</b>	Human
<b>Host:</b>	Rabbit
<b>Isotype:</b>	Ig
<b>Clonality:</b>	Polyclonal
<b>Immunogen:</b>	This antibody is generated from rabbits immunized with a KLH conjugated synthetic phosphopeptide corresponding to amino acid residues surrounding S217/221 of human MEK1.
<b>Specificity:</b>	This antibody detects MAP2K1/MEK1 pSer217/221. Predicted to cross react with Mouse and Rabbit (100% Antigen Homology).
<b>Formulation:</b>	PBS with 0.09% (W/V) Sodium Azide as preservative. State: Aff - Purified State: Liquid purified Ig fraction.
<b>Concentration:</b>	lot specific
<b>Purification:</b>	Protein G Affinity Chromatography. Then, the antibody fraction is peptide affinity purified in a 2-step procedure with control and phosphorylated peptides. The phospho-specific antibody is eluted with high and low pH buffers and neutralized immediately, followed by dialysis against PBS.
<b>Conjugation:</b>	Unconjugated
<b>Storage:</b>	Store the antibody undiluted at 2-8°C for one month or (in aliquots) at -20°C for longer. Avoid repeated freezing and thawing.
<b>Stability:</b>	Shelf life: one year from despatch.
<b>Gene Name:</b>	mitogen-activated protein kinase kinase 1



[View online »](#)

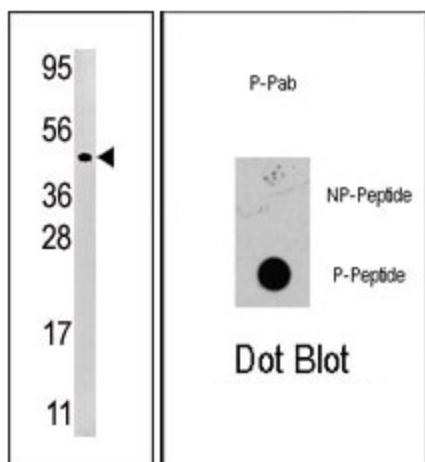
**Database Link:** [Entrez Gene 5604 Human Q02750](#)

**Background:** MEK1 is a dual specificity protein kinase that belongs to the MAP kinase kinase family. This kinase is known to play a critical role in mitogen growth factor signal transduction. It phosphorylates and thus activates MAPK1/ERK2 and MAPK2/ERK3. The activation of this kinase itself is dependent on the Ser/Thr phosphorylation by MAP kinase kinase kinases. The inhibition or degradation of this kinase is found to be involved in the pathogenesis of Yersinia and anthrax.

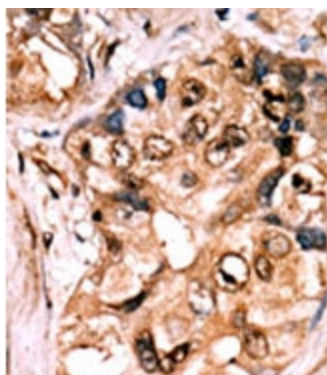
**Synonyms:** MAPKK 1, ERK activator kinase 1, MAPK/ERK kinase 1, MEK1, PRKMK1, MAP kinase kinase 1

**Note:** **Molecular weight:** 44424 Da

### Product images:



(LEFT) Western blot analysis of anti-Phospho-MEK1 Pab in Ramos cell line lysate (35ug/lane). Phospho-MEK1 (arrow) was detected using the purified Pab (1:60 dilution). (RIGHT) Dot blot analysis of anti-Phospho-MEK1 Pab on nitrocellulose membrane. 50ng of Phospho-peptide or Non Phospho-peptide per dot were adsorbed. Antibody working concentrations are 0.5ug per ml.



Formalin-fixed and paraffin-embedded human cancer tissue reacted with the primary antibody, which was peroxidase-conjugated to the secondary antibody, followed by AEC staining. This data demonstrates the use of this antibody for immunohistochemistry; clinical relevance has not been evaluated.