

## Product datasheet for **AP12630PU-N**

### IL3RB (CSF2RB) pTyr766 Rabbit Polyclonal Antibody

#### Product data:

Product Type:	Primary Antibodies
Applications:	WB
Recommended Dilution:	ELISA: 1/1,000. Dot Blot: 1/500. Western Blot: 1/100-1/500.
Reactivity:	Human
Host:	Rabbit
Isotype:	Ig
Clonality:	Polyclonal
Immunogen:	This antibody is generated from rabbits immunized with a KLH conjugated synthetic phosphopeptide corresponding to amino acid residues surrounding Y766 of human IL3R.
Specificity:	This antibody detects IL3R pTyr766.
Formulation:	PBS with 0.09% (W/V) Sodium Azide as preservative. State: Aff - Purified State: Liquid purified Ig fraction.
Concentration:	lot specific
Purification:	Protein G Affinity Chromatography. Then, the antibody fraction is peptide affinity purified in a 2-step procedure with control and phosphorylated peptides. The phospho-specific antibody is eluted with high and low pH buffers and neutralized immediately, followed by dialysis against PBS.
Conjugation:	Unconjugated
Storage:	Store the antibody undiluted at 2-8°C for one month or (in aliquots) at -20°C for longer. Avoid repeated freezing and thawing.
Stability:	Shelf life: one year from despatch.
Gene Name:	colony stimulating factor 2 receptor beta common subunit
Database Link:	<a href="#">Entrez Gene 1439 Human P32927</a>



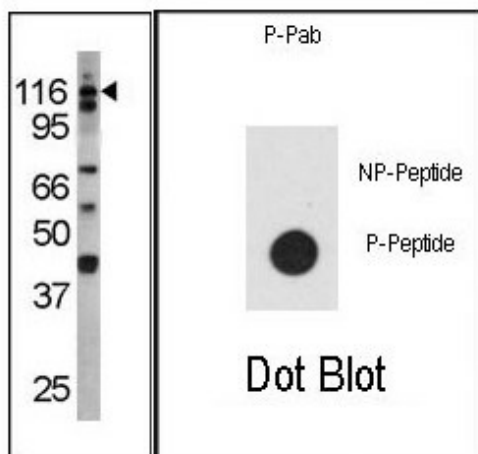
[View online »](#)

**Background:** IL3R (also known as CSF2RB) is a common beta chain of the high affinity receptor for IL-3, IL-5 and GM-CSF. Defective IL3R has been reported to be associated with protein alveolar proteinosis (PAP). PAP is an autosomal recessive fatal respiratory disease.

**Synonyms:** IL3RB, IL5RB, GM-CSF-RB

**Note:** **Molecular weight:** 97336 Da

**Product images:**



(LEFT) The anti-Phospho-IL3R-Y766 Pab is used in Western blot to detect Phospho-IL3R-Y766 in mouse heart tissue lysate. (RIGHT) Dot blot analysis of anti-hIL3R-pY766 Phospho-specific Pab on nitrocellulose membrane. 50ng of Phospho-peptide or Non Phospho-peptide per dot were adsorbed. Antibody working concentrations are 0.5ug per ml.