

Product datasheet for **AP12574PU-N**

Caspase-6 (CASP6) pSer257 Rabbit Polyclonal Antibody

Product data:

| | |
|-----------------------|---|
| Product Type: | Primary Antibodies |
| Applications: | IHC, WB |
| Recommended Dilution: | ELISA: 1/1,000. Western Blot: 1/100-1/500. Immunohistochemistry: 1/50-1/100. |
| Reactivity: | Human |
| Host: | Rabbit |
| Isotype: | Ig |
| Clonality: | Polyclonal |
| Immunogen: | This antibody is generated from rabbits immunized with a KLH conjugated synthetic phosphopeptide corresponding to amino acid residues surrounding S257 of human caspase 6. |
| Specificity: | This antibody detects Caspase-6 pSer257. Predicted to cross react with Mouse (100% Antigen Homology). |
| Formulation: | PBS with 0.09% (W/V) Sodium Azide as preservative. State: Aff - Purified State: Liquid purified Ig fraction. |
| Concentration: | lot specific |
| Purification: | Protein G Affinity Chromatography. Then, the antibody fraction is peptide affinity purified in a 2-step procedure with control and phosphorylated peptides. The phospho-specific antibody is eluted with high and low pH buffers and neutralized immediately, followed by dialysis against PBS. |
| Conjugation: | Unconjugated |
| Storage: | Store the antibody undiluted at 2-8°C for one month or (in aliquots) at -20°C for longer. Avoid repeated freezing and thawing. |
| Stability: | Shelf life: one year from despatch. |
| Gene Name: | caspase 6 |



[View online »](#)

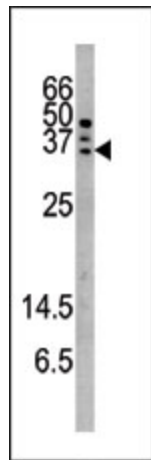
Database Link: [Entrez Gene 839 Human P55212](#)

Background: Caspase 6 is a member of the cysteine-aspartic acid protease (caspase) family. Sequential activation of caspases plays a central role in the execution-phase of cell apoptosis. Caspases exist as inactive proenzymes which undergo proteolytic processing at conserved aspartic residues to produce 2 subunits, large and small, that dimerize to form the active enzyme. This protein could be processed by caspases 7, 8 and 10, and is thought to function as a downstream enzyme in the caspase activation cascade.

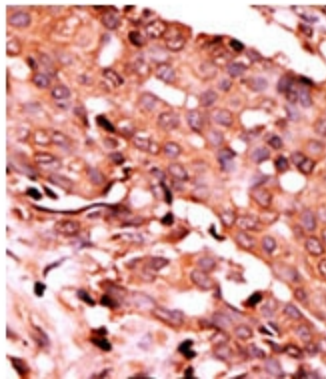
Synonyms: CASP-6, CASP6, MCH2, MCH-2

Note: **Molecular weight:** 33310 Da

Product images:



The anti-Phospho-Caspase 6-S257 Pab (#) is used in Western blot to detect Phospho-Caspase 6-S257 in mouse stomach tissue lysate



Formalin-fixed and paraffin-embedded human cancer tissue reacted with the primary antibody, which was peroxidase-conjugated to the secondary antibody, followed by AEC staining. This data demonstrates the use of this antibody for immunohistochemistry; clinical relevance has not been evaluated.