

Product datasheet for **AP12539PU-N**

Exonuclease 1 (EXO1) (N-term) Rabbit Polyclonal Antibody

Product data:

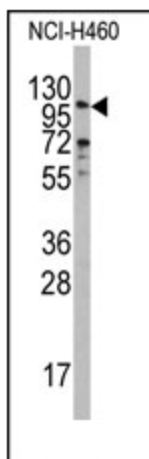
Product Type:	Primary Antibodies
Applications:	WB
Recommended Dilution:	ELISA: 1/1,000. Western Blot: 1/50-1/100.
Reactivity:	Human
Host:	Rabbit
Isotype:	Ig
Clonality:	Polyclonal
Immunogen:	This antibody is generated from rabbits immunized with a KLH conjugated synthetic peptide selected from the N-terminal region of human EXO1.
Specificity:	This antibody detects EXO1 (N-term).
Formulation:	PBS with 0.09% (W/V) Sodium Azide as preservative. State: Purified State: Liquid purified Ig fraction.
Concentration:	lot specific
Purification:	Saturated Ammonium Sulfate (SAS) precipitation followed by dialysis against PBS.
Conjugation:	Unconjugated
Storage:	Store the antibody undiluted at 2-8°C for one month or (in aliquots) at -20°C for longer. Avoid repeated freezing and thawing.
Stability:	Shelf life: one year from despatch.
Gene Name:	exonuclease 1
Database Link:	Entrez Gene 9156 Human Q9UQ84
Background:	EXO1 is a protein with 5' to 3' exonuclease activity as well as an RNase H activity. This protein is similar to the Saccharomyces cerevisiae protein Exo1 which interacts with Msh2 and which is involved in mismatch repair and recombination.
Synonyms:	Exonuclease I, EXOI, HEX1



[View online »](#)

Note: **Molecular weight:** 94103 Da

Product images:



Western blot analysis of anti-EXO1 Antibody (N-term) in NCI-H460 cell line lysates (35ug/lane). EXO1 (arrow) was detected using the purified Pab.