

## Product datasheet for **AP12535PU-N**

### CDA (C-term) Rabbit Polyclonal Antibody

#### Product data:

Product Type:	Primary Antibodies
Applications:	WB
Recommended Dilution:	<b>ELISA:</b> 1/1,000. <b>Western Blot:</b> 1/1,000.
Reactivity:	Human, Mouse
Host:	Rabbit
Isotype:	Ig
Clonality:	Polyclonal
Immunogen:	This antibody is generated from rabbits immunized with a KLH conjugated synthetic peptide between 118-146 amino acids from the C-term region of human CDA.
Specificity:	This antibody detects CDA (C-term).
Formulation:	PBS with 0.09% (W/V) Sodium Azide as preservative. State: Purified State: Liquid purified Ig fraction.
Concentration:	lot specific
Purification:	Saturated Ammonium Sulfate (SAS) precipitation followed by dialysis against PBS.
Conjugation:	Unconjugated
Storage:	Store the antibody undiluted at 2-8°C for one month or (in aliquots) at -20°C for longer. Avoid repeated freezing and thawing.
Stability:	Shelf life: one year from despatch.
Gene Name:	cytidine deaminase
Database Link:	<a href="#">Entrez Gene 978 Human P32320</a>
Background:	CDA forms a homotetramer that catalyzes the irreversible hydrolytic deamination of cytidine and deoxycytidine to uridine and deoxyuridine, respectively. This protein is one of several deaminases responsible for maintaining the cellular pyrimidine pool. Mutations in the CDA gene are associated with decreased sensitivity to the cytosine nucleoside analogue cytosine arabinoside used in the treatment of certain childhood leukemias.

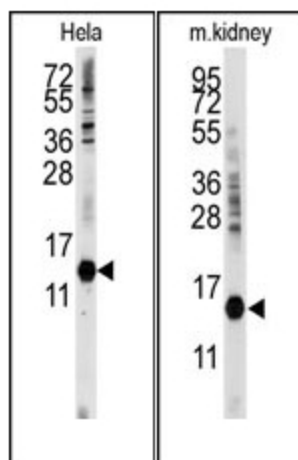


[View online »](#)

Synonyms: CDA, CDD

Note: **Molecular weight:** 16185 Da

**Product images:**



(LEFT) Western blot analysis of anti-CDA Antibody (C-term) in HeLa cell line lysates (35ug/lane). CDA (arrow) was detected using the purified Pab.  
(RIGHT) Western blot analysis of anti-CDA Antibody (C-term) in mouse kidney tissue lysates (35ug/lane). CDA (arrow) was detected using the purified Pab.