

## Product datasheet for **AP12531PU-N**

### SLAMF1 Rabbit Polyclonal Antibody

#### Product data:

Product Type:	Primary Antibodies
Applications:	WB
Recommended Dilution:	ELISA: 1/1,000. Western Blot: 1/50-1/100.
Reactivity:	Human
Host:	Rabbit
Isotype:	Ig
Clonality:	Polyclonal
Immunogen:	This antibody is generated from rabbits immunized with a KLH conjugated synthetic peptide between 296~325 amino acids surrounding Y307 of Human SLAMF1.
Specificity:	This antibody detects CD150/SLAMF1.
Formulation:	PBS with 0.09% (W/V) Sodium Azide as preservative. State: Aff - Purified State: Liquid purified Ig fraction.
Concentration:	lot specific
Purification:	Saturated Ammonium Sulfate (SAS) precipitation followed by dialysis against PBS.
Conjugation:	Unconjugated
Storage:	Store the antibody undiluted at 2-8°C for one month or (in aliquots) at -20°C for longer. Avoid repeated freezing and thawing.
Stability:	Shelf life: one year from despatch.
Gene Name:	signaling lymphocytic activation molecule family member 1
Database Link:	<a href="#">Entrez Gene 6504 Human Q13291</a>
Background:	SLAMF1 is high-affinity self-ligand important in bidirectional T-cell to B-cell stimulation. SLAM-induced signal-transduction events in T-lymphocytes are different from those in B-cells. Two modes of SLAM signaling are likely to exist: one in which the inhibitor SH2D1A acts as a negative regulator and another in which protein-tyrosine phosphatase 2C (PTPN11)-dependent signal transduction operates.

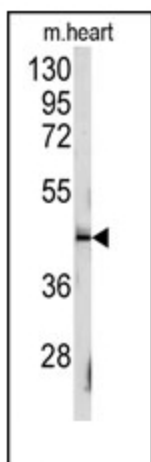


[View online »](#)

Synonyms: Slam, CDw150, Ipo-3

Note: **Molecular weight:** 37231 Da

**Product images:**



Western blot analysis of anti-SLAMF1 Antibody (Y307) in mouse heart tissue lysates (35ug/lane). SLAMF1 (arrow) was detected using the purified Pab.