

Product datasheet for **AP12530PU-N**

LSM1 (Center) Rabbit Polyclonal Antibody

Product data:

Product Type:	Primary Antibodies
Applications:	WB
Recommended Dilution:	ELISA: 1/1,000. Western Blot: 1/50-1/100.
Reactivity:	Human, Mouse
Host:	Rabbit
Isotype:	Ig
Clonality:	Polyclonal
Immunogen:	This antibody is generated from rabbits immunized with a KLH conjugated synthetic peptide selected from the C-terminal region of human LSM1.
Specificity:	This antibody detects LSM1 (Center).
Formulation:	PBS with 0.09% (W/V) Sodium Azide as preservative. State: Purified State: Liquid purified Ig fraction.
Concentration:	lot specific
Purification:	Saturated Ammonium Sulfate (SAS) precipitation followed by dialysis against PBS.
Conjugation:	Unconjugated
Storage:	Store the antibody undiluted at 2-8°C for one month or (in aliquots) at -20°C for longer. Avoid repeated freezing and thawing.
Stability:	Shelf life: one year from despatch.
Gene Name:	LSM1 homolog, mRNA degradation associated
Database Link:	Entrez Gene 27257 Human O15116
Background:	Sm-like proteins were identified in a variety of organisms based on sequence homology with the Sm protein family. Sm-like proteins contain the Sm sequence motif, which consists of 2 regions separated by a linker of variable length that folds as a loop. The Sm-like proteins are thought to form a stable heteromer present in tri-snRNP particles, which are important for pre-mRNA splicing.

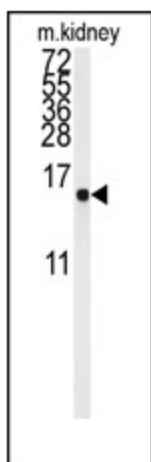


[View online »](#)

Synonyms: CASM, Cancer-associated Sm-like

Note: **Molecular weight:** 15179 Da

Product images:



Western blot analysis of anti-LSM1 Antibody (Center) in mouse kidney tissue lysates (35ug/lane). LSM1 (arrow) was detected using the purified Pab.