

Product datasheet for **AP12526PU-N**

AIMP2 Rabbit Polyclonal Antibody

Product data:

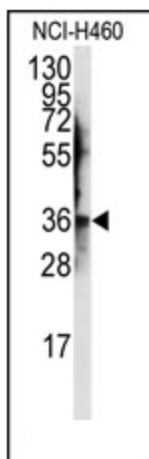
Product Type:	Primary Antibodies
Applications:	WB
Recommended Dilution:	ELISA: 1/1,000. Western Blot: 1/50-1/100.
Reactivity:	Human
Host:	Rabbit
Isotype:	Ig
Clonality:	Polyclonal
Immunogen:	This antibody is generated from rabbits immunized with a KLH conjugated synthetic peptide selected from the Center region of human JTV1.
Specificity:	This antibody detects JTV1 (Center).
Formulation:	PBS with 0.09% (W/V) Sodium Azide as preservative. State: Purified State: Liquid purified Ig fraction.
Concentration:	lot specific
Purification:	Saturated Ammonium Sulfate (SAS) precipitation followed by dialysis against PBS.
Conjugation:	Unconjugated
Storage:	Store the antibody undiluted at 2-8°C for one month or (in aliquots) at -20°C for longer. Avoid repeated freezing and thawing.
Stability:	Shelf life: one year from despatch.
Gene Name:	aminoacyl tRNA synthetase complex interacting multifunctional protein 2
Database Link:	Entrez Gene 7965 Human Q13155
Background:	JTV1 is probable core protein of the multisynthetase complex that serves as a template for the assembly of the supramolecular structure. This protein Mediates ubiquitination of FUBP1 and its degradation by the proteasome.
Synonyms:	JTV-1; JTV1; P38; PRO0992



[View online »](#)

Note: **Molecular weight:** 35349 Da

Product images:



Western blot analysis of anti-JTV1 Antibody (Center) in NCI-H460 cell line lysates (35ug/lane). JTV1 (arrow) was detected using the purified Pab.