

Product datasheet for **AP12525PU-N**

RFC3 (Center) Rabbit Polyclonal Antibody

Product data:

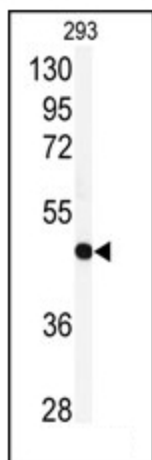
Product Type:	Primary Antibodies
Applications:	WB
Recommended Dilution:	ELISA: 1/1,000. Western Blot: 1/50-1/100.
Reactivity:	Human
Host:	Rabbit
Isotype:	Ig
Clonality:	Polyclonal
Immunogen:	This antibody is generated from rabbits immunized with a KLH conjugated synthetic peptide selected from the center region of human RFC3.
Specificity:	This antibody detects RFC3 (Center).
Formulation:	PBS with 0.09% (W/V) Sodium Azide as preservative. State: Purified State: Liquid purified Ig fraction.
Concentration:	lot specific
Purification:	Saturated Ammonium Sulfate (SAS) precipitation followed by dialysis against PBS.
Conjugation:	Unconjugated
Storage:	Store the antibody undiluted at 2-8°C for one month or (in aliquots) at -20°C for longer. Avoid repeated freezing and thawing.
Stability:	Shelf life: one year from despatch.
Gene Name:	replication factor C subunit 3
Database Link:	Entrez Gene 5983 Human P40938
Background:	The elongation of primed DNA templates by DNA polymerase delta and DNA polymerase epsilon requires the accessory proteins proliferating cell nuclear antigen (PCNA) and replication factor C (RFC). RFC, also named activator 1, is a protein complex consisting of five distinct subunits of 140, 40, 38, 37, and 36 kDa.
Synonyms:	Replication factor C subunit 3, Activator 1 subunit 3, RF-C 38 kDa subunit



[View online »](#)

Note: **Molecular weight:** 40556 Da

Product images:



Western blot analysis of anti-RFC3 Antibody (Center) in 293 cell line lysates (35ug/lane). RFC3 (arrow) was detected using the purified Pab.