

## Product datasheet for **AP12524PU-N**

### Hsp105 (HSPH1) (C-term) Rabbit Polyclonal Antibody

#### Product data:

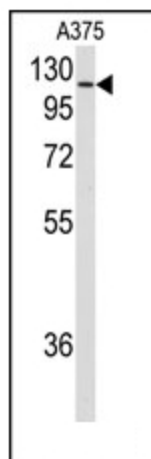
Product Type:	Primary Antibodies
Applications:	WB
Recommended Dilution:	ELISA: 1/1,000. Western Blot: 1/50-1/100.
Reactivity:	Human
Host:	Rabbit
Isotype:	Ig
Clonality:	Polyclonal
Immunogen:	This antibody is generated from rabbits immunized with a KLH conjugated synthetic peptide selected from the C-terminal region of human HSPH1.
Specificity:	This antibody detects HSPH1 (C-term).
Formulation:	PBS with 0.09% (W/V) Sodium Azide as preservative. State: Purified State: Liquid purified Ig fraction.
Concentration:	lot specific
Purification:	Saturated Ammonium Sulfate (SAS) precipitation followed by dialysis against PBS.
Conjugation:	Unconjugated
Storage:	Store the antibody undiluted at 2-8°C for one month or (in aliquots) at -20°C for longer. Avoid repeated freezing and thawing.
Stability:	Shelf life: one year from despatch.
Gene Name:	heat shock protein family H (Hsp110) member 1
Database Link:	<a href="#">Entrez Gene 10808 Human Q92598</a>
Background:	HSPH1 prevents the aggregation of denatured proteins in cells under severe stress, on which the ATP levels decrease markedly. This protein inhibits HSPA8/HSC70 ATPase and chaperone activities.
Synonyms:	Heat shock 110 kDa protein, Antigen NY-CO-25, HSPH1, HSP-105, HSP110, KIAA0201



[View online »](#)

Note: **Molecular weight:** 96865 Da

**Product images:**



Western blot analysis of anti-HSPH1 Antibody (C-term) in A375 cell line lysates (35ug/lane). HSPH1 (arrow) was detected using the purified Pab.