

Product datasheet for **AP12517PU-N**

ENPP2 (Center) Rabbit Polyclonal Antibody

Product data:

Product Type:	Primary Antibodies
Applications:	WB
Recommended Dilution:	ELISA: 1/1,000. Western Blot: 1/50-1/100.
Reactivity:	Human
Host:	Rabbit
Isotype:	Ig
Clonality:	Polyclonal
Immunogen:	This antibody is generated from rabbits immunized with a KLH conjugated synthetic peptide selected from the Center region of human ENPP2.
Specificity:	This antibody detects Autotaxin/ENPP2 (Center).
Formulation:	PBS with 0.09% (W/V) Sodium Azide as preservative. State: Purified State: Liquid purified Ig fraction.
Concentration:	lot specific
Purification:	Saturated Ammonium Sulfate (SAS) precipitation followed by dialysis against PBS.
Conjugation:	Unconjugated
Storage:	Store the antibody undiluted at 2-8°C for one month or (in aliquots) at -20°C for longer. Avoid repeated freezing and thawing.
Stability:	Shelf life: one year from despatch.
Gene Name:	ectonucleotide pyrophosphatase/phosphodiesterase 2
Database Link:	Entrez Gene 5168 Human Q13822



[View online »](#)

Background:

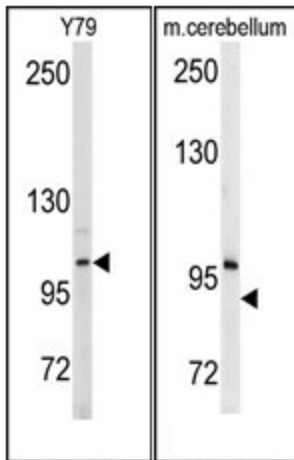
ENPP2 functions as both a phosphodiesterase, which cleaves phosphodiester bonds at the 5' end of oligonucleotides, and a phospholipase, which catalyzes production of lysophosphatidic acid (LPA) in extracellular fluids. LPA evokes growth factor-like responses including stimulation of cell proliferation and chemotaxis. This protein stimulates the motility of tumor cells and has angiogenic properties, and its expression is upregulated in several kinds of carcinomas. This protein is secreted and further processed to make the biologically active form.

Synonyms:

E-NPP 2, ENPP2, ATX, PDNP2

Note:

Molecular weight: 99004 Da

Product images:

(LEFT) Western blot analysis of anti-ENPP2 Antibody (Center) in Y79 cell line lysates (35ug/lane). ENPP2 (arrow) was detected using the purified Pab. (RIGHT) Western blot analysis of anti-ENPP2 Antibody (Center K416) in mouse cerebellum tissue lysates (35ug/lane).ENPP2 (arrow) was detected using the purified Pab.