

## Product datasheet for **AP12504PU-N**

### SHIP (INPP5D) (Center) Rabbit Polyclonal Antibody

#### Product data:

Product Type:	Primary Antibodies
Applications:	WB
Recommended Dilution:	ELISA: 1/1,000. Western Blot: 1/50-1/100.
Reactivity:	Human
Host:	Rabbit
Isotype:	Ig
Clonality:	Polyclonal
Immunogen:	This antibody is generated from rabbits immunized with a KLH conjugated synthetic peptide selected from the Center region of human INPP5D.
Specificity:	This antibody detects INPP5D (Center).
Formulation:	PBS with 0.09% (W/V) Sodium Azide as preservative. State: Purified State: Liquid purified Ig fraction.
Concentration:	lot specific
Purification:	Saturated Ammonium Sulfate (SAS) precipitation followed by dialysis against PBS.
Conjugation:	Unconjugated
Storage:	Store the antibody undiluted at 2-8°C for one month or (in aliquots) at -20°C for longer. Avoid repeated freezing and thawing.
Stability:	Shelf life: one year from despatch.
Gene Name:	inositol polyphosphate-5-phosphatase D
Database Link:	<a href="#">Entrez Gene 3635 Human Q92835</a>



[View online »](#)

**Background:**

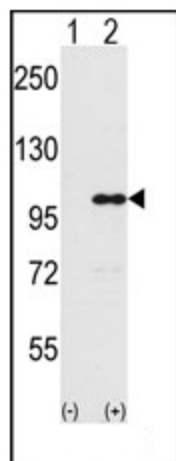
INPP5D is a member of the inositol polyphosphate-5-phosphatase (INPP5) family and it is a protein with an N-terminal SH2 domain, an inositol phosphatase domain, and two C-terminal protein interaction domains. Expression of this protein is restricted to hematopoietic cells where its movement from the cytosol to the plasma membrane is mediated by tyrosine phosphorylation. At the plasma membrane, the protein hydrolyzes the 5' phosphate from phosphatidylinositol (3,4,5)-trisphosphate and inositol-1,3,4,5-tetrakisphosphate, thereby affecting multiple signaling pathways. Overall, the protein functions as a negative regulator of myeloid cell proliferation and survival.

**Synonyms:**

SHIP, SHIP1, SHIP-1, p150Ship, SIP-145

**Note:**

**Molecular weight:** 133292 Da

**Product images:**

Western blot analysis of INPP5D (arrow) using rabbit polyclonal INPP5D Antibody (Center). 293 cell lysates (2 ug/lane) either nontransfected (Lane 1) or transiently transfected with the INPP5D gene (Lane 2) (Origene Technologies).