

Product datasheet for **AP12501PU-N**

SNRPD1 (Center) Rabbit Polyclonal Antibody

Product data:

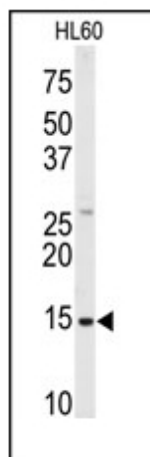
Product Type:	Primary Antibodies
Applications:	WB
Recommended Dilution:	ELISA: 1/1,000. Western Blot: 1/50-1/100.
Reactivity:	Human
Host:	Rabbit
Isotype:	Ig
Clonality:	Polyclonal
Immunogen:	This antibody is generated from rabbits immunized with a KLH conjugated synthetic peptide selected from the Center region of human SNRPD1.
Specificity:	This antibody detects SNRPD1 (Center).
Formulation:	PBS with 0.09% (W/V) Sodium Azide as preservative. State: Purified State: Liquid purified Ig fraction.
Concentration:	lot specific
Purification:	Saturated Ammonium Sulfate (SAS) precipitation followed by dialysis against PBS.
Conjugation:	Unconjugated
Storage:	Store the antibody undiluted at 2-8°C for one month or (in aliquots) at -20°C for longer. Avoid repeated freezing and thawing.
Stability:	Shelf life: one year from despatch.
Gene Name:	small nuclear ribonucleoprotein D1 polypeptide
Database Link:	Entrez Gene 6632 Human P62314
Background:	SNRPD1 is a small nuclear ribonucleoprotein that belongs to the SNRNP core protein family. This protein may act as a charged protein scaffold to promote SNRNP assembly or strengthen SNRNP-SNRNP interactions through nonspecific electrostatic contacts with RNA.
Synonyms:	SNRPD1, snRNP core protein D1, Sm-D autoantigen



[View online »](#)

Note: **Molecular weight:** 13282 Da

Product images:



Western blot analysis of anti-SNRPD1 Antibody (Center) in HL60 cell line lysates (35ug/lane). SNRPD1 (arrow) was detected using the purified Pab.