

## Product datasheet for **AP12500PU-N**

### **SNRPD1 (C-term) Rabbit Polyclonal Antibody**

#### **Product data:**

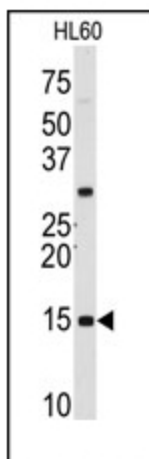
<b>Product Type:</b>	Primary Antibodies
<b>Applications:</b>	WB
<b>Recommended Dilution:</b>	ELISA: 1/1,000. Western Blot: 1/50-1/100.
<b>Reactivity:</b>	Human
<b>Host:</b>	Rabbit
<b>Isotype:</b>	Ig
<b>Clonality:</b>	Polyclonal
<b>Immunogen:</b>	This antibody is generated from rabbits immunized with a KLH conjugated synthetic peptide selected from the C-terminal region of human SNRPD1.
<b>Specificity:</b>	This antibody detects SNRPD1 (C-term).
<b>Formulation:</b>	PBS with 0.09% (W/V) Sodium Azide as preservative. State: Purified State: Liquid purified Ig fraction.
<b>Concentration:</b>	lot specific
<b>Purification:</b>	Saturated Ammonium Sulfate (SAS) precipitation followed by dialysis against PBS.
<b>Conjugation:</b>	Unconjugated
<b>Storage:</b>	Store the antibody undiluted at 2-8°C for one month or (in aliquots) at -20°C for longer. Avoid repeated freezing and thawing.
<b>Stability:</b>	Shelf life: one year from despatch.
<b>Gene Name:</b>	small nuclear ribonucleoprotein D1 polypeptide
<b>Database Link:</b>	<a href="#">Entrez Gene 6632 Human P62314</a>
<b>Background:</b>	SNRPD1 is a small nuclear ribonucleoprotein that belongs to the SNRNP core protein family. This protein may act as a charged protein scaffold to promote SNRNP assembly or strengthen SNRNP-SNRNP interactions through nonspecific electrostatic contacts with RNA.
<b>Synonyms:</b>	SNRPD1, snRNP core protein D1, Sm-D autoantigen



[View online »](#)

Note: **Molecular weight:** 13282 Da

**Product images:**



Western blot analysis of anti-SNRPD1 Antibody (C-term) in HL60 cell line lysates (35ug/lane). SNRPD1 (arrow) was detected using the purified Pab.