

## Product datasheet for **AP12499PU-N**

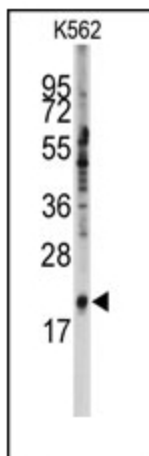
### SNRPC (C-term) Rabbit Polyclonal Antibody

#### Product data:

Product Type:	Primary Antibodies
Applications:	WB
Recommended Dilution:	ELISA: 1/1,000. Western Blot: 1/50-1/100.
Reactivity:	Human
Host:	Rabbit
Isotype:	Ig
Clonality:	Polyclonal
Immunogen:	This antibody is generated from rabbits immunized with a KLH conjugated synthetic peptide selected from the C-terminal region of human SNRPC.
Specificity:	This antibody detects SNRPC (C-term).
Formulation:	PBS with 0.09% (W/V) Sodium Azide as preservative. State: Purified State: Liquid purified Ig fraction.
Concentration:	lot specific
Purification:	Saturated Ammonium Sulfate (SAS) precipitation followed by dialysis against PBS.
Conjugation:	Unconjugated
Storage:	Store the antibody undiluted at 2-8°C for one month or (in aliquots) at -20°C for longer. Avoid repeated freezing and thawing.
Stability:	Shelf life: one year from despatch.
Gene Name:	small nuclear ribonucleoprotein polypeptide C
Database Link:	<a href="#">Entrez Gene 6631 Human P09234</a>
Background:	SNRPC is associated with snRNP U1.
Synonyms:	U1 snRNP C
Note:	<b>Molecular weight:</b> 17394 Da



[View online »](#)

**Product images:**

Western blot analysis of anti-SNRPC Antibody (C-term) in K562 cell line lysates (35ug/lane). SNRPC (arrow) was detected using the purified Pab.