

Product datasheet for **AP12497PU-N**

Seladin 1 (DHCR24) (N-term) Rabbit Polyclonal Antibody

Product data:

Product Type:	Primary Antibodies
Applications:	WB
Recommended Dilution:	ELISA: 1/1,000. Western Blot: 1/50-1/100.
Reactivity:	Human, Mouse
Host:	Rabbit
Isotype:	Ig
Clonality:	Polyclonal
Immunogen:	This antibody is generated from rabbits immunized with a KLH conjugated synthetic peptide selected from the N-terminal region of human DHCR24.
Specificity:	This antibody detects DHCR24 (N-term).
Formulation:	PBS with 0.09% (W/V) Sodium Azide as preservative. State: Purified State: Liquid purified Ig fraction.
Concentration:	lot specific
Purification:	Saturated Ammonium Sulfate (SAS) precipitation followed by dialysis against PBS.
Conjugation:	Unconjugated
Storage:	Store the antibody undiluted at 2-8°C for one month or (in aliquots) at -20°C for longer. Avoid repeated freezing and thawing.
Stability:	Shelf life: one year from despatch.
Gene Name:	24-dehydrocholesterol reductase
Database Link:	Entrez Gene 1718 Human Q15392



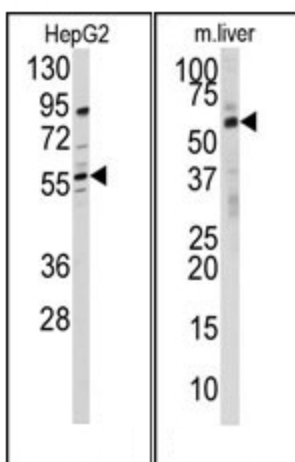
[View online »](#)

Background: DHCR24 is a flavin adenine dinucleotide (FAD)-dependent oxidoreductase which catalyzes the reduction of the delta-24 double bond of sterol intermediates during cholesterol biosynthesis. This protein contains a leader sequence that directs it to the endoplasmic reticulum membrane. Missense mutations in this gene have been associated with desmosterolosis. Also, reduced expression of its gene occurs in the temporal cortex of Alzheimer disease patients and overexpression has been observed in adrenal gland cancer cells.

Synonyms: 24-dehydrocholesterol reductase, KIAA0018

Note: **Molecular weight:** 60101 Da

Product images:



(LEFT) Western blot analysis of anti-DHCR24 Antibody (N-term) in HepG2 cell line lysates (35ug/lane). DHCR24 (arrow) was detected using the purified Pab. (RIGHT) Western blot analysis of anti-DHCR24 Antibody (N-term) in mouse liver tissue lysates (35ug/lane). DHCR24 (arrow) was detected using the purified Pab.