

## Product datasheet for **AP12496PU-N**

### **POLR1C (C-term) Rabbit Polyclonal Antibody**

#### **Product data:**

<b>Product Type:</b>	Primary Antibodies
<b>Applications:</b>	WB
<b>Recommended Dilution:</b>	ELISA: 1/1,000. Western Blot: 1/50-1/100.
<b>Reactivity:</b>	Human
<b>Host:</b>	Rabbit
<b>Isotype:</b>	Ig
<b>Clonality:</b>	Polyclonal
<b>Immunogen:</b>	This antibody is generated from rabbits immunized with a KLH conjugated synthetic peptide selected from the C-terminal region of human POLR1C.
<b>Specificity:</b>	This antibody detects POLR1C (C-term).
<b>Formulation:</b>	PBS with 0.09% (W/V) Sodium Azide as preservative. State: Purified State: Liquid purified Ig fraction.
<b>Concentration:</b>	lot specific
<b>Purification:</b>	Saturated Ammonium Sulfate (SAS) precipitation followed by dialysis against PBS.
<b>Conjugation:</b>	Unconjugated
<b>Storage:</b>	Store the antibody undiluted at 2-8°C for one month or (in aliquots) at -20°C for longer. Avoid repeated freezing and thawing.
<b>Stability:</b>	Shelf life: one year from despatch.
<b>Gene Name:</b>	polymerase (RNA) I subunit C
<b>Database Link:</b>	<a href="#">Entrez Gene 9533 Human O15160</a>
<b>Background:</b>	DNA-dependent RNA polymerase catalyzes the transcription of DNA into RNA using the four ribonucleoside triphosphates as substrates. Common component of RNA polymerases I and III which synthesize ribosomal RNA precursors and small RNAs, such as 5S rRNA and tRNAs, respectively. RPAC1 is part of the Pol core element with the central large cleft and probably a clamp element that moves to open and close the cleft.

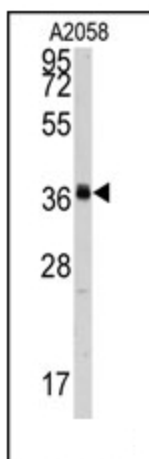


[View online »](#)

**Synonyms:** RNA polymerases I and III subunit AC1, RPA40, RPA39, RPC40, POLR1E

**Note:** **Molecular weight:** 39250 Da

**Product images:**



Western blot analysis of anti-POLR1C Antibody (C-term) in A2058 cell line lysates (35ug/lane). POLR1C (arrow) was detected using the purified Pab.