

Product datasheet for **AP12491PU-N**

PFD6 (PFDN6) (N-term) Rabbit Polyclonal Antibody

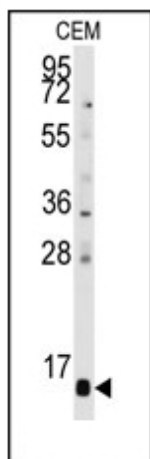
Product data:

Product Type:	Primary Antibodies
Applications:	WB
Recommended Dilution:	ELISA: 1/1,000. Western Blot: 1/50-1/100.
Reactivity:	Human
Host:	Rabbit
Isotype:	Ig
Clonality:	Polyclonal
Immunogen:	This antibody is generated from rabbits immunized with a KLH conjugated synthetic peptide selected from the C-terminal region of human PFDN6.
Specificity:	This antibody detects PFDN6 (N-term).
Formulation:	PBS with 0.09% (W/V) Sodium Azide as preservative. State: Purified State: Liquid purified Ig fraction.
Concentration:	lot specific
Purification:	Saturated Ammonium Sulfate (SAS) precipitation followed by dialysis against PBS.
Conjugation:	Unconjugated
Storage:	Store the antibody undiluted at 2-8°C for one month or (in aliquots) at -20°C for longer. Avoid repeated freezing and thawing.
Stability:	Shelf life: one year from despatch.
Gene Name:	prefoldin subunit 6
Database Link:	Entrez Gene 10471 Human O15212
Background:	PFDN6 binds specifically to cytosolic chaperonin (c-CPN) and transfers target proteins to it. This protein also binds to nascent polypeptide chain and promotes folding in an environment in which there are many competing pathways for nonnative proteins.
Synonyms:	Prefoldin subunit 6, PFD6, Ke2

[View online »](#)

Note: **Molecular weight:** 14583 Da

Product images:



Western blot analysis of anti-PFDN6 Antibody (N-term) in CEM cell line lysates (35ug/lane). PFDN6 (arrow) was detected using the purified Pab.