

## Product datasheet for **AP12481PU-N**

### Annexin A3 (ANXA3) Rabbit Polyclonal Antibody

#### Product data:

Product Type:	Primary Antibodies
Applications:	WB
Recommended Dilution:	ELISA: 1/1,000. Western Blot: 1/50-1/100.
Reactivity:	Human, Mouse
Host:	Rabbit
Isotype:	Ig
Clonality:	Polyclonal
Immunogen:	This antibody is generated from rabbits immunized with a KLH conjugated synthetic peptide selected from the C-terminal region of human ANXA3.
Specificity:	This antibody detects Annexin A3/ANXA3 (Center).
Formulation:	PBS with 0.09% (W/V) Sodium Azide as preservative. State: Purified State: Liquid purified Ig fraction.
Concentration:	lot specific
Purification:	Saturated Ammonium Sulfate (SAS) precipitation followed by dialysis against PBS.
Conjugation:	Unconjugated
Storage:	Store the antibody undiluted at 2-8°C for one month or (in aliquots) at -20°C for longer. Avoid repeated freezing and thawing.
Stability:	Shelf life: one year from despatch.
Gene Name:	annexin A3
Database Link:	<a href="#">Entrez Gene 306 Human P12429</a>
Background:	ANXA3 is a member of the annexin family. Members of this calcium-dependent phospholipid-binding protein family play a role in the regulation of cellular growth and in signal transduction pathways. This protein functions in the inhibition of phospholipase A2 and cleavage of inositol 1,2-cyclic phosphate to form inositol 1-phosphate. This protein may also play a role in anti-coagulation.

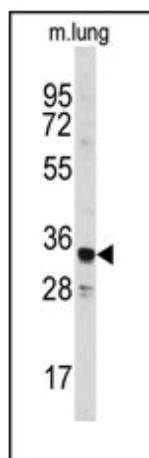


[View online »](#)

**Synonyms:** ANX3, Annexin-3, Annexin III, PAP-III, Lipocortin III, 35-alpha calcimedlin

**Note:** **Molecular weight:** 36375 Da

**Product images:**



Western blot analysis of anti-ANXA3 Antibody (Center) in mouse lung tissue lysates (35ug/lane). ANXA3 (arrow) was detected using the purified Pab.