

Product datasheet for **AP12457PU-N**

S100A11 Rabbit Polyclonal Antibody

Product data:

Product Type:	Primary Antibodies
Applications:	WB
Recommended Dilution:	ELISA: 1/1,000. Western Blot: 1/50-1/100.
Reactivity:	Human
Host:	Rabbit
Isotype:	Ig
Clonality:	Polyclonal
Immunogen:	This antibody is generated from rabbits immunized with a KLH conjugated synthetic peptide corresponding to amino acid residues surrounding S6 of human S100A11.
Specificity:	This antibody detects S100A11.
Formulation:	PBS with 0.09% (W/V) Sodium Azide as preservative. State: Aff - Purified State: Liquid purified Ig fraction.
Concentration:	lot specific
Purification:	Protein A Chromatography followed by peptide affinity purification.
Conjugation:	Unconjugated
Storage:	Store the antibody undiluted at 2-8°C for one month or (in aliquots) at -20°C for longer. Avoid repeated freezing and thawing.
Stability:	Shelf life: one year from despatch.
Gene Name:	S100 calcium binding protein A11
Database Link:	Entrez Gene 6282 Human P31949



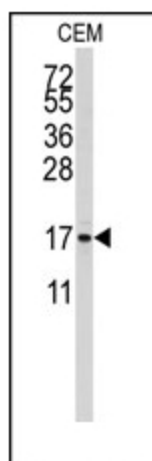
[View online »](#)

Background: S100A11 is a member of the S100 family of proteins containing 2 EF-hand calcium-binding motifs. S100 proteins are localized in the cytoplasm and/or nucleus of a wide range of cells, and involved in the regulation of a number of cellular processes such as cell cycle progression and differentiation. This protein may function in motility, invasion, and tubulin polymerization. Chromosomal rearrangements and altered expression of S100A11 gene have been implicated in tumor metastasis.

Synonyms: S100-A11, S100C, S100-C, MLN70

Note: **Molecular weight:** 11740 Da

Product images:



Western blot analysis of anti-S100A11 Antibody (S6) in CEM cell line lysates (35ug/lane). S100A11 (arrow) was detected using the purified Pab.