

Product datasheet for **AP12446PU-N**

RFC2 (N-term) Rabbit Polyclonal Antibody

Product data:

Product Type:	Primary Antibodies
Applications:	WB
Recommended Dilution:	ELISA: 1/1,000. Western Blot: 1/50-1/100.
Reactivity:	Human
Host:	Rabbit
Isotype:	Ig
Clonality:	Polyclonal
Immunogen:	This antibody is generated from rabbits immunized with a KLH conjugated synthetic peptide selected from the N-terminal region of human RFC2.
Specificity:	This antibody detects RFC2 (N-term).
Formulation:	PBS with 0.09% (W/V) Sodium Azide as preservative. State: Purified State: Liquid purified Ig fraction.
Concentration:	lot specific
Purification:	Saturated Ammonium Sulfate (SAS) precipitation followed by dialysis against PBS.
Conjugation:	Unconjugated
Storage:	Store the antibody undiluted at 2-8°C for one month or (in aliquots) at -20°C for longer. Avoid repeated freezing and thawing.
Stability:	Shelf life: one year from despatch.
Gene Name:	replication factor C subunit 2
Database Link:	Entrez Gene 5982 Human P35250



[View online »](#)

Background:

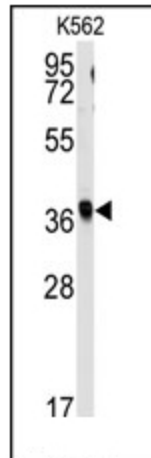
The elongation of primed DNA templates by DNA polymerase delta and epsilon requires the action of the accessory proteins, proliferating cell nuclear antigen (PCNA) and replication factor C (RFC). RFC, also called activator 1, is a protein complex consisting of five distinct subunits of 145, 40, 38, 37, and 36.5 kD. RFC2 is the 40 kD subunit, which has been shown to be responsible for binding ATP. Deletion of RFC2 gene has been associated with Williams syndrome.

Synonyms:

Replication factor C subunit 2, Activator 1 subunit 2, RF-C 40 kDa subunit

Note:

Molecular weight: 39157 Da

Product images:

Western blot analysis of anti-RFC2 Antibody (N-term) in K562 cell line lysates (35ug/lane). RFC2 (arrow) was detected using the purified Pab.