

## Product datasheet for **AP12444PU-N**

### FOXP3 (C-term) Rabbit Polyclonal Antibody

#### Product data:

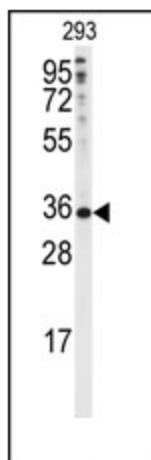
Product Type:	Primary Antibodies
Applications:	IHC, WB
Recommended Dilution:	ELISA: 1/1,000. Western Blot: 1/50-1/100. Immunohistochemistry: 1/50-1/100.
Reactivity:	Human, Mouse
Host:	Rabbit
Isotype:	Ig
Clonality:	Polyclonal
Immunogen:	KLH conjugated synthetic peptide between 290~319 amino acids from the C-terminal region of Human FOXP3.
Specificity:	This antibody detects FOXP3 (C-term).
Formulation:	PBS with 0.09% (W/V) Sodium Azide as preservative. State: Aff - Purified State: Liquid purified Ig fraction.
Concentration:	lot specific
Purification:	Protein A Chromatography, followed by peptide affinity purification.
Conjugation:	Unconjugated
Storage:	Store the antibody undiluted at 2-8°C for one month or (in aliquots) at -20°C for longer. Avoid repeated freezing and thawing.
Stability:	Shelf life: one year from despatch.
Gene Name:	forkhead box P3
Database Link:	<a href="#">Entrez Gene 50943 Human Q9BZS1</a>
Background:	FOXP3 is a member of the forkhead/winged-helix family of transcriptional regulators. Defects in FOXP3 gene are the cause of immunodeficiency polyendocrinopathy, enteropathy, X-linked syndrome (IPEX), also known as X-linked autoimmunity-immunodeficiency syndrome.
Synonyms:	Forkhead box protein P3, IPEX, JM2, Scurfin



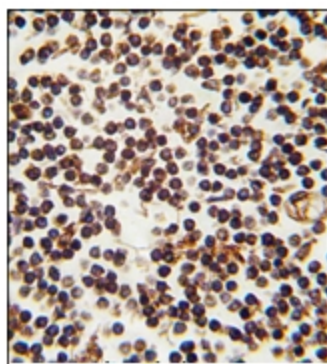
[View online »](#)

Note: **Molecular weight:** 47244 Da

### Product images:



Western blot analysis of anti-FOXP3 Antibody (C-term) in 293 cell line lysates (35ug/lane). FOXP3 (arrow) was detected using the purified Pab.



Formalin-fixed, Paraffin-Embedded Human lymph tissue reacted with FOXP3 antibody (C-term) using peroxidase-conjugated secondary antibody followed by DAB staining.