

## Product datasheet for **AP12431PU-N**

### EXOSC8 (C-term) Rabbit Polyclonal Antibody

#### Product data:

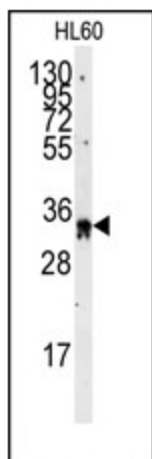
Product Type:	Primary Antibodies
Applications:	WB
Recommended Dilution:	ELISA: 1/1,000. Western Blot: 1/50-1/100.
Reactivity:	Human
Host:	Rabbit
Isotype:	Ig
Clonality:	Polyclonal
Immunogen:	This antibody is generated from rabbits immunized with a KLH conjugated synthetic peptide selected from the C-terminal region of human EXOSC8.
Specificity:	This antibody detects EXOSC8 (C-term).
Formulation:	PBS with 0.09% (W/V) Sodium Azide as preservative. State: Purified State: Liquid purified Ig fraction.
Concentration:	lot specific
Purification:	Saturated Ammonium Sulfate (SAS) precipitation followed by dialysis against PBS.
Conjugation:	Unconjugated
Storage:	Store the antibody undiluted at 2-8°C for one month or (in aliquots) at -20°C for longer. Avoid repeated freezing and thawing.
Stability:	Shelf life: one year from despatch.
Gene Name:	exosome component 8
Database Link:	<a href="#">Entrez Gene 11340 Human Q96B26</a>
Background:	EXOSC8 is a component of the exosome 3'→5' exoribonuclease complex, a complex that degrades inherently unstable mRNAs containing AU-rich elements (AREs) within their 3'-untranslated regions. It is required for the 3'-processing of the 7S pre-RNA to the mature 5.8S rRNA and has a 3'-5' exonuclease activity.
Synonyms:	OIP2, RRP43, Exosome component 8, p9, Opa-interacting protein 2



[View online »](#)

**Note:** **Molecular weight:** 29909 Da predicted from amino acid sequence.  
Theoretical pI: 5.17

**Product images:**



Western blot analysis of anti-EXOSC8 Antibody (C-term) in HL60 cell line lysates (35ug/lane). EXOSC8 (arrow) was detected using the purified Pab.