

Product datasheet for **AP12426PU-N**

NSE (ENO2) Rabbit Polyclonal Antibody

Product data:

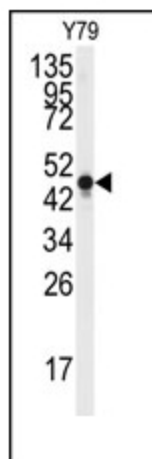
Product Type:	Primary Antibodies
Applications:	WB
Recommended Dilution:	ELISA: 1/1,000. Western Blot: 1/50-1/100.
Reactivity:	Human
Host:	Rabbit
Isotype:	Ig
Clonality:	Polyclonal
Immunogen:	This antibody is generated from rabbits immunized with a KLH conjugated synthetic peptide corresponding to amino acid residues surrounding Y236 of human NSE.
Specificity:	This antibody detects Neuron Specific Enolase/NSE.
Formulation:	PBS with 0.09% (W/V) Sodium Azide as preservative. State: Aff - Purified State: Liquid purified Ig fraction.
Concentration:	lot specific
Purification:	Protein A Chromatography, followed by peptide affinity purification.
Conjugation:	Unconjugated
Storage:	Store the antibody undiluted at 2-8°C for one month or (in aliquots) at -20°C for longer. Avoid repeated freezing and thawing.
Stability:	Shelf life: one year from despatch.
Gene Name:	enolase 2
Database Link:	Entrez Gene 2026 Human P09104
Background:	NSE is one of the three enolase isoenzymes found in mammals. This isoenzyme, a homodimer, is found in mature neurons and cells of neuronal origin. A switch from alpha enolase to gamma enolase occurs in neural tissue during development in rats and primates.
Synonyms:	NSE, ENO2, Enolase 2, Neural enolase, Gamma-enolase



[View online »](#)

Note: **Molecular weight:** 47138 Da

Product images:



Western blot analysis of anti-NSE Antibody (Y236) in Y79 cell line lysates (35ug/lane). NSE (arrow) was detected using the purified Pab.