

## Product datasheet for **AP12421PU-N**

### Fibrillarlin (FBL) (Center) Rabbit Polyclonal Antibody

#### Product data:

Product Type:	Primary Antibodies
Applications:	WB
Recommended Dilution:	ELISA: 1/1,000. Western Blot: 1/50-1/100.
Reactivity:	Human
Host:	Rabbit
Isotype:	Ig
Clonality:	Polyclonal
Immunogen:	This antibody is generated from rabbits immunized with a KLH conjugated synthetic peptide selected from the center region of human FBL.
Specificity:	This antibody detects FBL (Center).
Formulation:	PBS with 0.09% (W/V) Sodium Azide as preservative. State: Purified State: Liquid purified Ig fraction.
Concentration:	lot specific
Purification:	Saturated Ammonium Sulfate (SAS) precipitation followed by dialysis against PBS.
Conjugation:	Unconjugated
Storage:	Store the antibody undiluted at 2-8°C for one month or (in aliquots) at -20°C for longer. Avoid repeated freezing and thawing.
Stability:	Shelf life: one year from despatch.
Gene Name:	fibrillarlin
Database Link:	<a href="#">Entrez Gene 2091 Human P22087</a>



[View online »](#)

**Background:**

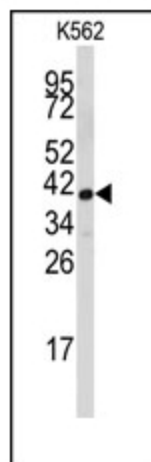
FBL is a component of a nucleolar small nuclear ribonucleoprotein (snRNP) particle thought to participate in the first step in processing preribosomal RNA. It is associated with the U3, U8, and U13 small nuclear RNAs and is located in the dense fibrillar component (DFC) of the nucleolus. This protein contains an N-terminal repetitive domain that is rich in glycine and arginine residues, like fibrillarins in other species. Its central region resembles an RNA-binding domain and contains an RNP consensus sequence. Antisera from approximately 8% of humans with the autoimmune disease scleroderma recognize fibrillarlin.

**Synonyms:**

FIB1, FLRN, Fibrillarlin, RNU3IP1, NOP1, LOT3, Nucleolar protein 1, Nucleolar Marker

**Note:**

**Molecular weight:** 33784 Da predicted from amino acid sequence.  
Theoretical pI: 10.18

**Product images:**

Western blot analysis of anti-FBL Antibody (Center) in K562 cell line lysates (35ug/lane). FBL (arrow) was detected using the purified Pab.