

Product datasheet for **AP12401PU-N**

ZIC3 (N-term) Rabbit Polyclonal Antibody

Product data:

Product Type:	Primary Antibodies
Applications:	IHC, WB
Recommended Dilution:	ELISA: 1/1,000. Western Blot: 1/50-1/100. Immunohistochemistry: 1/10-1/50.
Reactivity:	Human
Host:	Rabbit
Isotype:	Ig
Clonality:	Polyclonal
Immunogen:	This ZIC3 antibody is generated from rabbits immunized with a KLH conjugated synthetic peptide between 11-40 amino acids from the N-terminal region of human ZIC3.
Specificity:	This antibody detects ZIC3 (N-term). Predicted to cross react with Mouse (100% Antigen Homology).
Formulation:	PBS with 0.09% (W/V) Sodium Azide as preservative. State: Purified State: Liquid purified Ig fraction.
Concentration:	lot specific
Purification:	Saturated Ammonium Sulfate (SAS) precipitation followed by dialysis against PBS.
Conjugation:	Unconjugated
Storage:	Store the antibody undiluted at 2-8°C for one month or (in aliquots) at -20°C for longer. Avoid repeated freezing and thawing.
Stability:	Shelf life: one year from despatch.
Gene Name:	Zic family member 3
Database Link:	Entrez Gene 7547 Human O60481



[View online »](#)

Background:

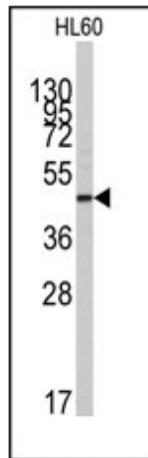
ZIC3 is a member of the ZIC family of C2H2-type zinc finger proteins. This nuclear protein probably functions as a transcription factor in early stages of left-right body axis formation. Mutations in the gene encoding ZIC3 cause X-linked visceral heterotaxy, which includes congenital heart disease and left-right axis defects in organs.

Synonyms:

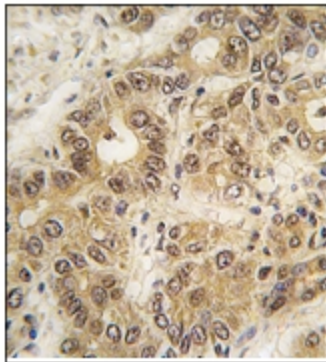
HTX; HTX1; ZNF203

Note:

Molecular weight: 50569 Da

Product images:

Western blot analysis of anti-ZIC3 Antibody (N-term) in HL60 cell line lysates (35ug/lane). ZIC3 (arrow) was detected using the purified Pab (1:60 dilution).



Formalin-fixed and paraffin-embedded human hepatocarcinoma tissue reacted with ZIC3 antibody (N-term), which was peroxidase-conjugated to the secondary antibody, followed by DAB staining. This data demonstrates the use of this antibody for immunohistochemistry; clinical relevance has not been evaluated.