

Product datasheet for **AP12398PU-N**

TRF1 (TERF1) (C-term) Rabbit Polyclonal Antibody

Product data:

Product Type:	Primary Antibodies
Applications:	WB
Recommended Dilution:	ELISA: 1/1,000. Western Blot: 1/50-1/100.
Reactivity:	Human
Host:	Rabbit
Isotype:	Ig
Clonality:	Polyclonal
Immunogen:	This antibody is generated from rabbits immunized with a KLH conjugated synthetic peptide selected from the C-terminal region of human TERF1.
Specificity:	This antibody detects TERF1/TRF (C-term).
Formulation:	PBS with 0.09% (W/V) Sodium Azide as preservative. State: Purified State: Liquid purified Ig fraction.
Concentration:	lot specific
Purification:	Saturated Ammonium Sulfate (SAS) precipitation followed by dialysis against PBS.
Conjugation:	Unconjugated
Storage:	Store the antibody undiluted at 2-8°C for one month or (in aliquots) at -20°C for longer. Avoid repeated freezing and thawing.
Stability:	Shelf life: one year from despatch.
Gene Name:	telomeric repeat binding factor 1
Database Link:	Entrez Gene 7013 Human P54274
Background:	TERF1 is a telomere specific protein which is a component of the telomere nucleoprotein complex. This protein is present at telomeres throughout the cell cycle and functions as an inhibitor of telomerase, acting in cis to limit the elongation of individual chromosome ends. The protein structure contains a C-terminal Myb motif, a dimerization domain near its N-terminus and an acidic N-terminus.

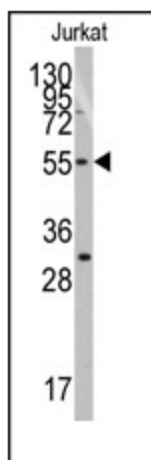


[View online »](#)

Synonyms: PIN2, TRBF1, TRF, TRF1

Note: **Molecular weight:** 50246 Da

Product images:



Western blot analysis of anti-TERF1 (C-term) Pab in Jurkat cell line lysates (35ug/lane). TERF1 (C-term) (arrow) was detected using the purified Pab (1:60 dilution).