

## Product datasheet for **AP12390PU-N**

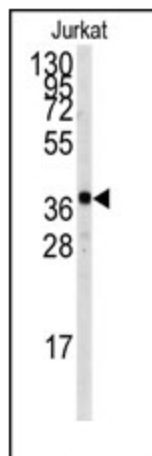
### TAL1 Rabbit Polyclonal Antibody

#### Product data:

Product Type:	Primary Antibodies
Applications:	WB
Recommended Dilution:	ELISA: 1/1,000. Western Blot: 1/50-1/100.
Reactivity:	Human
Host:	Rabbit
Isotype:	Ig
Clonality:	Polyclonal
Immunogen:	This antibody is generated from rabbits immunized with a KLH conjugated synthetic peptide corresponding to amino acid residues surrounding T90 of human TAL1.
Specificity:	This antibody detects TAL1.
Formulation:	PBS with 0.09% (W/V) Sodium Azide as preservative. State: Aff - Purified State: Liquid purified Ig fraction.
Concentration:	lot specific
Purification:	Protein A Chromatography followed by peptide affinity purification
Conjugation:	Unconjugated
Storage:	Store the antibody undiluted at 2-8°C for one month or (in aliquots) at -20°C for longer. Avoid repeated freezing and thawing.
Stability:	Shelf life: one year from despatch.
Gene Name:	T-cell acute lymphocytic leukemia 1
Database Link:	<a href="#">Entrez Gene 6886 Human P17542</a>
Background:	TAL1 is implicated in the genesis of hemopoietic malignancies. It may play an important role in hemopoietic differentiation. It serves as a positive regulator of erythroid differentiation.
Synonyms:	TAL-1, SCL, TCL5
Note:	<b>Molecular weight:</b> 34271 Da



[View online »](#)

**Product images:**

Western blot analysis of anti-TAL1 Antibody in Jurkat cell line lysates (35ug/lane). TAL1 (arrow) was detected using the purified Pab.