

## Product datasheet for **AP12389PU-N**

### Monocarboxylic acid transporter 1 (SLC16A1) (Center) Rabbit Polyclonal Antibody

#### Product data:

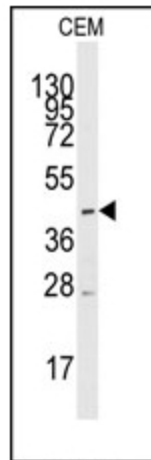
Product Type:	Primary Antibodies
Applications:	WB
Recommended Dilution:	ELISA: 1/1,000. Western Blot: 1/50-1/100.
Reactivity:	Human
Host:	Rabbit
Isotype:	Ig
Clonality:	Polyclonal
Immunogen:	This antibody is generated from rabbits immunized with a KLH conjugated synthetic peptide between 200-228 amino acids from the Center region of Human SLC16A1.
Specificity:	This antibody detects SLC16A1 (Center).
Formulation:	PBS with 0.09% (W/V) Sodium Azide as preservative. State: Purified State: Liquid purified Ig fraction.
Concentration:	lot specific
Purification:	Saturated Ammonium Sulfate (SAS) precipitation followed by dialysis against PBS.
Conjugation:	Unconjugated
Storage:	Store the antibody undiluted at 2-8°C for one month or (in aliquots) at -20°C for longer. Avoid repeated freezing and thawing.
Stability:	Shelf life: one year from despatch.
Gene Name:	solute carrier family 16 member 1
Database Link:	<a href="#">Entrez Gene 6566 Human P53985</a>
Background:	SLC16A1 is a monocarboxylate transporter (MCT1) that mediates the movement of lactate and pyruvate across cell membranes. Import and export of these substrates by tissues such as erythrocytes, muscle, intestine, and kidney are ascribed largely to the action of a proton-coupled MCT (Garcia et al., 1994 [PubMed 8124722]).
Synonyms:	MCT 1, MCT1, Monocarboxylate transporter 1



[View online »](#)

**Note:** Calculated Molecular weight: 53958 Da predicted from amino acid sequence.  
Theoretical pI: 8.91 Da

**Product images:**



Western blot analysis of anti-SLC16A1 Antibody (Center) in CEM cell line lysates (35ug/lane). SLC16A1 (arrow) was detected using the purified Pab (1:60dilution).