

Product datasheet for **AP12386PU-N**

Phosphoribosyl pyrophosphate amidotransferase (PPAT) (Center) Rabbit Polyclonal Antibody

Product data:

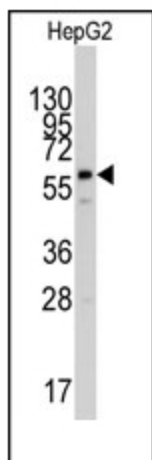
Product Type:	Primary Antibodies
Applications:	WB
Recommended Dilution:	ELISA: 1/1,000. Western Blot: 1/50-1/100.
Reactivity:	Human
Host:	Rabbit
Isotype:	Ig
Clonality:	Polyclonal
Immunogen:	This antibody is generated from rabbits immunized with a KLH conjugated synthetic peptide selected from the Center region of human PPAT.
Specificity:	This antibody detects PPAT (Center).
Formulation:	PBS with 0.09% (W/V) Sodium Azide as preservative. State: Purified State: Liquid purified Ig fraction.
Concentration:	lot specific
Purification:	Saturated Ammonium Sulfate (SAS) precipitation followed by dialysis against PBS.
Conjugation:	Unconjugated
Storage:	Store the antibody undiluted at 2-8°C for one month or (in aliquots) at -20°C for longer. Avoid repeated freezing and thawing.
Stability:	Shelf life: one year from despatch.
Gene Name:	phosphoribosyl pyrophosphate amidotransferase
Database Link:	Entrez Gene 5471 Human Q06203
Background:	PPAT is a member of the purine/pyrimidine phosphoribosyltransferase family. This protein is a regulatory allosteric enzyme that catalyzes the first step of de novo purine nucleotide biosynthesis.
Synonyms:	Amidophosphoribosyltransferase, ATase, GPAT



[View online »](#)

Note: **Molecular weight:** 57399 Da

Product images:



Western blot analysis of anti-PPAT Antibody (Center) in HepG2 cell line lysates (35ug/lane). PPAT (arrow) was detected using the purified Pab (1:60 dilution).