

Product datasheet for **AP12382PU-N**

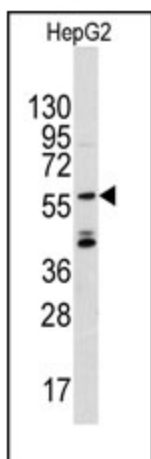
ANGEL2 (Center) Rabbit Polyclonal Antibody

Product data:

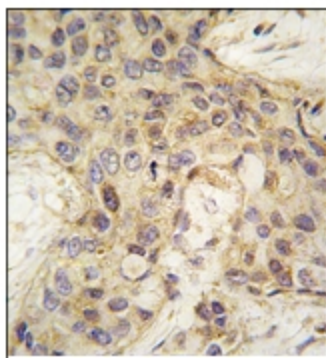
Product Type:	Primary Antibodies
Applications:	IHC, WB
Recommended Dilution:	ELISA: 1/1,000. Western Blot: 1/50-1/100. Immunohistochemistry: 1/10-1/50.
Reactivity:	Human
Host:	Rabbit
Isotype:	Ig
Clonality:	Polyclonal
Immunogen:	This antibody is generated from rabbits immunized with a KLH conjugated synthetic peptide selected from the Center region of human ANGEL2.
Specificity:	This antibody detects ANGEL2 (Center).
Formulation:	PBS with 0.09% (W/V) Sodium Azide as preservative. State: Purified State: Liquid purified Ig fraction.
Concentration:	lot specific
Purification:	Saturated Ammonium Sulfate (SAS) precipitation followed by dialysis against PBS.
Conjugation:	Unconjugated
Storage:	Store the antibody undiluted at 2-8°C for one month or (in aliquots) at -20°C for longer. Avoid repeated freezing and thawing.
Stability:	Shelf life: one year from despatch.
Gene Name:	angel homolog 2 (Drosophila)
Database Link:	Entrez Gene 90806 Human Q5VTE6
Background:	ANGEL 2 is a member of the CCR4/nocturin family.
Synonyms:	KIAA0759L
Note:	Molecular weight: 62339 Da



[View online »](#)

Product images:

Western blot analysis of anti-ANGEL2 Pab in CEM cell line lysates (35ug/lane). ANGEL2 (arrow) was detected using the purified Pab (1:60 dilution).



Formalin-fixed and paraffin-embedded human breast carcinoma tissue reacted with ANGEL2 antibody (Center), which was peroxidase-conjugated to the secondary antibody, followed by DAB staining. This data demonstrates the use of this antibody for immunohistochemistry; clinical relevance has not been evaluated.