

Product datasheet for **AP12381PU-N**

ADCY2 (C-term) Rabbit Polyclonal Antibody

Product data:

| | |
|-----------------------|---|
| Product Type: | Primary Antibodies |
| Applications: | IHC, WB |
| Recommended Dilution: | ELISA: 1/1,000. Western Blot: 1/50-1/100. Immunohistochemistry: 1/10-1/50. |
| Reactivity: | Human |
| Host: | Rabbit |
| Isotype: | Ig |
| Clonality: | Polyclonal |
| Immunogen: | This antibody is generated from rabbits immunized with a KLH conjugated synthetic peptide selected from the C-terminal region of human ADCY2. |
| Specificity: | This antibody detects Adenylate Cyclase 2 (ADCY2) (C-term). |
| Formulation: | PBS with 0.09% (W/V) Sodium Azide as preservative. State: Purified State: Liquid purified Ig fraction. |
| Concentration: | lot specific |
| Purification: | Saturated Ammonium Sulfate (SAS) precipitation followed by dialysis against PBS. |
| Conjugation: | Unconjugated |
| Storage: | Store the antibody undiluted at 2-8°C for one month or (in aliquots) at -20°C for longer. Avoid repeated freezing and thawing. |
| Stability: | Shelf life: one year from despatch. |
| Gene Name: | adenylate cyclase 2 (brain) |
| Database Link: | Entrez Gene 108 Human Q08462 |
| Background: | ADCY2 is a member of the family of adenylate cyclases, which are membrane-associated enzymes that catalyze the formation of the secondary messenger cyclic adenosine monophosphate(cAMP). This enzyme is insensitive to Ca(2+)/calmodulin, and is stimulated by the G protein beta and gamma subunit complex. |

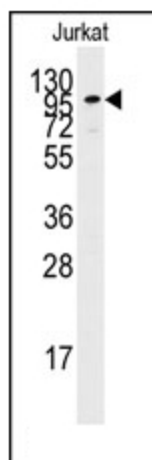


[View online »](#)

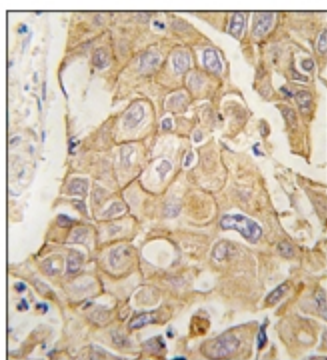
Synonyms: ADCY2, KIAA1060, Adenylate cyclase type II, ATP pyrophosphate-lyase 2, Adenylyl cyclase 2

Note: **Molecular weight:** 123603 Da

Product images:



Western blot analysis of anti-ADCY2 Pab in Jurkat cell line lysates (35ug/lane). ADCY2 (arrow) was detected using the purified Pab (1:60 dilution).



Formalin-fixed and paraffin-embedded human lung carcinoma tissue reacted with ADCY2 antibody (C-term), which was peroxidase-conjugated to the secondary antibody, followed by DAB staining. This data demonstrates the use of this antibody for