

Product datasheet for **AP12365PU-N**

Aldolase C (ALDOC) (C-term) Rabbit Polyclonal Antibody

Product data:

Product Type:	Primary Antibodies
Applications:	IHC, WB
Recommended Dilution:	ELISA: 1/1,000. Western Blot: 1/50-1/100 Immunohistochemistry: 1/10-1/50.
Reactivity:	Human
Host:	Rabbit
Isotype:	Ig
Clonality:	Polyclonal
Immunogen:	This antibody is generated from rabbits immunized with a KLH conjugated synthetic peptide selected from the C-terminal region of human ALDOC.
Specificity:	This antibody detects Aldolase C/ALDOC (C-term). Predicted to cross react with Mouse (100% Antigen Homology).
Formulation:	PBS with 0.09% (W/V) Sodium Azide as preservative. State: Purified State: Liquid purified Ig fraction.
Concentration:	lot specific
Purification:	Saturated Ammonium Sulfate (SAS) precipitation followed by dialysis against PBS.
Conjugation:	Unconjugated
Storage:	Store the antibody undiluted at 2-8°C for one month or (in aliquots) at -20°C for longer. Avoid repeated freezing and thawing.
Stability:	Shelf life: one year from despatch.
Gene Name:	aldolase, fructose-bisphosphate C
Database Link:	Entrez Gene 230 Human P09972



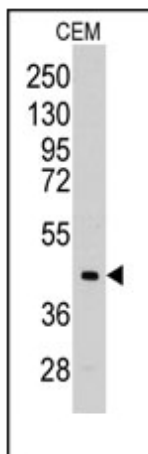
[View online »](#)

Background: ALDOC is a member of the fructose-biphosphate aldolase protein family. Expressed specifically in the hippocampus and Purkinje cells of the brain, this protein is a glycolytic enzyme that catalyzes the reversible aldol cleavage of fructose-1,6-biphosphate and fructose 1-phosphate to dihydroxyacetone phosphate and either glyceraldehyde-3-phosphate or glyceraldehyde, respectively.

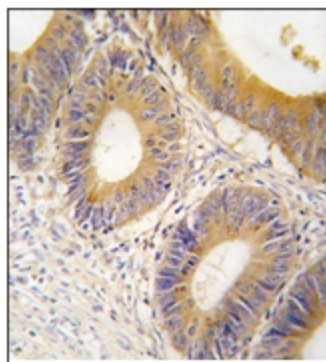
Synonyms: ALDC, Brain-type aldolase

Note: **Molecular weight:** 39456 Da

Product images:



Western blot analysis of anti-ALDOC Antibody (C-term) in CEM cell line lysates (35ug/lane). ALDOC (arrow) was detected using the purified Pab (1:60 dilution).



Formalin-fixed and paraffin-embedded human colon carcinoma tissue reacted with ALDOC antibody (C-term), which was peroxidase-conjugated to the secondary antibody, followed by DAB staining. This data demonstrates the use of this antibody for immunohistochemistry; clinical relevance has not been evaluated.