

## Product datasheet for **AP12352PU-N**

### **IDO1 (C-term) Rabbit Polyclonal Antibody**

#### **Product data:**

Product Type:	Primary Antibodies
Applications:	IHC, WB
Recommended Dilution:	<b>Peptide ELISA:</b> 1/1,000. <b>Western Blot:</b> 1/50-1/100. <b>Immunohistchemistry:</b> 1/10-1/50.
Reactivity:	Human
Host:	Rabbit
Isotype:	Ig
Clonality:	Polyclonal
Immunogen:	KLH conjugated synthetic peptide between 374-403 amino acids from the C-terminal region of human INDO.
Specificity:	This antibody detects INDO (C-term).
Formulation:	PBS with 0.09% (W/V) Sodium Azide as preservative. State: Purified State: Liquid purified Ig fraction.
Concentration:	lot specific
Purification:	Saturated Ammonium Sulfate (SAS) precipitation followed by dialysis against PBS.
Conjugation:	Unconjugated
Storage:	Store undiluted at 2-8°C for one month or (in aliquots) at -20°C for longer. Avoid repeated freezing and thawing.
Stability:	Shelf life: one year from despatch.
Gene Name:	indoleamine 2,3-dioxygenase 1
Database Link:	<a href="#">Entrez Gene 3620 Human P14902</a>
Background:	Gamma-interferon (IFNG; MIM 147570) has an antiproliferative effect on many tumor cells and inhibits intracellular pathogens such as Toxoplasma and Chlamydia, at least partly because of the induction of indoleamine 2,3-dioxygenase (INDO; EC 1.13.11.52). This enzyme catalyzes the degradation of the essential amino acid L-tryptophan to N-formyl-kynurenine.

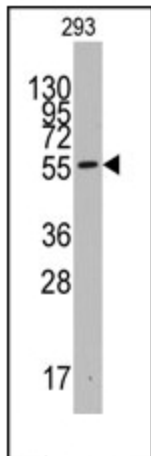


[View online »](#)

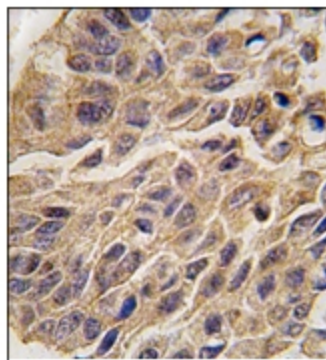
**Synonyms:** IDO1, IDO, INDO, Indoleamine 2,3-dioxygenase 1, EC=1.13.11.52, Indoleamine 2,3-dioxygenase, IDO, Indoleamine-pyrrole 2,3-dioxygenase

**Note:** **Calculated Molecular weight:** 45326 Da

**Product images:**



Western blot analysis of anti-INDO Antibody (C-term) in 293 cell line lysates (35ug/lane). INDO (arrow) was detected using the purified Pab (1:60 dilution).



INDO antibody (C-term) staining of Formalin-Fixed and Paraffin-Embedded Human lung carcinoma tissue. The primary antibody was peroxidase-conjugated to the secondary antibody, followed by DAB staining. This data demonstrates the use of this antibody for immunohistochemistry; clinical relevance has not been evaluated.