

## Product datasheet for **AP12350PU-N**

### Aldolase (ALDOA) (C-term) Rabbit Polyclonal Antibody

#### Product data:

Product Type:	Primary Antibodies
Applications:	IHC, WB
Recommended Dilution:	ELISA: 1/1,000. Western Blot: 1/50-1/100. Immunohistochemistry: 1/10-1/50.
Reactivity:	Human
Host:	Rabbit
Isotype:	Ig
Clonality:	Polyclonal
Immunogen:	This antibody is generated from rabbits immunized with a KLH conjugated synthetic peptide selected from the C-terminal region of human ALDOA.
Specificity:	This antibody detects Aldolase A/ALDOA (C-term). Predicted to cross react with Rabbit (100% Antigen Homology).
Formulation:	PBS with 0.09% (W/V) Sodium Azide as preservative. State: Purified State: Liquid purified Ig fraction.
Concentration:	lot specific
Purification:	Saturated Ammonium Sulfate (SAS) precipitation followed by dialysis against PBS.
Conjugation:	Unconjugated
Storage:	Store the antibody undiluted at 2-8°C for one month or (in aliquots) at -20°C for longer. Avoid repeated freezing and thawing.
Stability:	Shelf life: one year from despatch.
Gene Name:	aldolase, fructose-bisphosphate A
Database Link:	<a href="#">Entrez Gene 226 Human P04075</a>



[View online »](#)

**Background:**

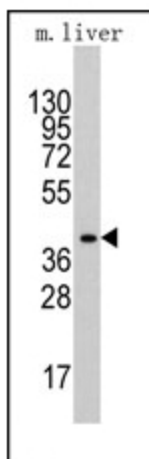
Aldolase A (fructose-bisphosphate aldolase) is a glycolytic enzyme that catalyzes the reversible conversion of fructose-1,6-bisphosphate to glyceraldehyde 3-phosphate and dihydroxyacetone phosphate. Three aldolase isozymes (A, B, and C), encoded by three different genes, are differentially expressed during development. Aldolase A is found in the developing embryo and is produced in even greater amounts in adult muscle. Aldolase A expression is repressed in adult liver, kidney and intestine and similar to aldolase C levels in brain and other nervous tissue. Aldolase A deficiency has been associated with myopathy and hemolytic anemia.

**Synonyms:**

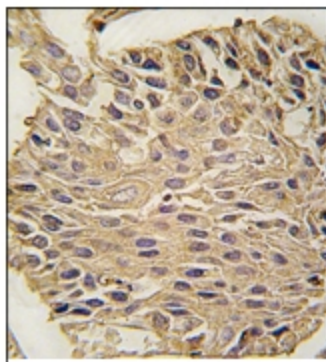
ALDA, NY-LU-1, Muscle-type aldolase

**Note:**

**Molecular weight:** 39420 Da

**Product images:**


Western blot analysis of anti-ALDOA Antibody (C-term) in mouse liver tissue lysates (35ug/lane). ALDOA (arrow) was detected using the purified Pab (1:60 dilution).



Formalin-fixed and paraffin-embedded human lung carcinoma tissue reacted with ALDOA antibody (C-term), which was peroxidase-conjugated to the secondary antibody, followed by DAB staining. This data demonstrates the use of this antibody for immunohistochemistry; clinical relevance has not been evaluated.