

## Product datasheet for **AP12345PU-N**

### VE Cadherin (CDH5) (N-term) Rabbit Polyclonal Antibody

#### Product data:

Product Type:	Primary Antibodies
Applications:	WB
Recommended Dilution:	ELISA: 1/1,000. Western Blot: 1/50-1/100.
Reactivity:	Human
Host:	Rabbit
Isotype:	Ig
Clonality:	Polyclonal
Immunogen:	This antibody is generated from rabbits immunized with a KLH conjugated synthetic peptide at the N-term of human CDH5.
Specificity:	This antibody detects VE Cadherin (CD144/CDH5) (N-term).
Formulation:	PBS with 0.09% (W/V) Sodium Azide as preservative. State: Aff - Purified State: Liquid purified Ig fraction.
Concentration:	lot specific
Purification:	Protein A Chromatography followed by peptide affinity purification
Conjugation:	Unconjugated
Storage:	Store the antibody undiluted at 2-8°C for one month or (in aliquots) at -20°C for longer. Avoid repeated freezing and thawing.
Stability:	Shelf life: one year from despatch.
Gene Name:	cadherin 5
Database Link:	<a href="#">Entrez Gene 1003 Human P33151</a>



[View online »](#)

**Background:**

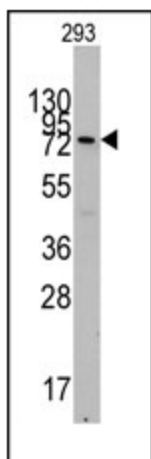
CDH5 is a classical cadherin from the cadherin superfamily and is located in a six-cadherin cluster in a region on the long arm of chromosome 16 that is involved in loss of heterozygosity events in breast and prostate cancer. It is a calcium-dependent cell-cell adhesion glycoprotein comprised of five extracellular cadherin repeats, a transmembrane region and a highly conserved cytoplasmic tail. Functioning as a classic cadherin by imparting to cells the ability to adhere in a homophilic manner, the protein may play an important role in endothelial cell biology through control of the cohesion and organization of the intercellular junctions.

**Synonyms:**

VE-Cadherin, Vascular endothelial cadherin, CDH5

**Note:**

**Molecular weight:** 87516 Da

**Product images:**


Western blot analysis of anti-CDH5 (N-term) Pab in 293 cell line lysates (35ug/lane). CDH5 (arrow) was detected using the purified Pab (1:60 dilution).