

Product datasheet for **AP12332PU-N**

ERVWE1 (ERVW-1) (Center) Rabbit Polyclonal Antibody

Product data:

Product Type:	Primary Antibodies
Applications:	WB
Recommended Dilution:	ELISA: 1/1,000. Western Blot: 1/50-1/100.
Reactivity:	Human
Host:	Rabbit
Isotype:	Ig
Clonality:	Polyclonal
Immunogen:	This antibody is generated from rabbits immunized with a KLH conjugated synthetic peptide selected from the Center region of human ERVWE1.
Specificity:	This antibody detects ERVWE1 (Center).
Formulation:	PBS with 0.09% (W/V) Sodium Azide as preservative. State: Purified State: Liquid purified Ig fraction.
Concentration:	lot specific
Purification:	Protein G Chromatography, eluted with high and low pH buffers and neutralized immediately, followed by dialysis against PBS.
Conjugation:	Unconjugated
Storage:	Store the antibody undiluted at 2-8°C for one month or (in aliquots) at -20°C for longer. Avoid repeated freezing and thawing.
Stability:	Shelf life: one year from despatch.
Gene Name:	endogenous retrovirus group W member 1
Database Link:	Entrez Gene 30816 Human Q9UQF0



[View online »](#)

Background:

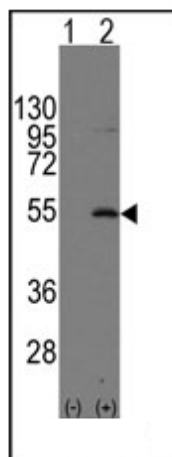
Many different human endogenous retrovirus (HERV) families are expressed in normal placental tissue at high levels, suggesting that HERVs are functionally important in reproduction. The protein, also known as syncytin, is expressed in the placental syncytiotrophoblast and is involved in fusion of the cytotrophoblast cells to form the syncytial layer of the placenta. This protein has the characteristics of a typical retroviral envelope protein, including a furin cleavage site that separates the surface (SU) and transmembrane (TM) proteins which form a heterodimer.

Synonyms:

Envelope polyprotein gPr73, HERV-7q Envelope protein, HERV-W envelope protein, Syncytin, Syncytin-1, Enverin, Env-W

Note:

Molecular weight: 59866 Da

Product images:

Western blot analysis of Syncytin (ERVWE1) (arrow) using rabbit polyclonal Syncytin (ERVWE1) Antibody (Center). 293 cell lysates (2 ug/lane) either nontransfected (Lane 1) or transiently transfected with the Syncytin (ERVWE1) gene (Lane 2) (Origene Technologies).