

Product datasheet for **AP12325PU-N**

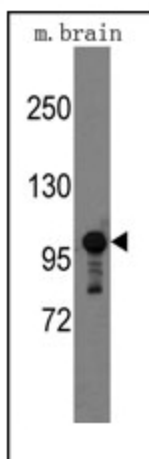
SEMA5A (C-term) Rabbit Polyclonal Antibody

Product data:

Product Type:	Primary Antibodies
Applications:	WB
Recommended Dilution:	ELISA: 1/1,000. Western blot: 1/50-1/100.
Reactivity:	Human, Mouse
Host:	Rabbit
Isotype:	Ig
Clonality:	Polyclonal
Immunogen:	This antibody is generated from rabbits immunized with a KLH conjugated synthetic peptide selected from the C-terminal region of mouse Sema5a.
Specificity:	This antibody detects Sema5a (C-term).
Formulation:	PBS with 0.09% (W/V) Sodium Azide as preservative. State: Purified State: Liquid purified Ig fraction.
Concentration:	lot specific
Purification:	Protein G Chromatography, eluted with high and low pH buffers and neutralized immediately, followed by dialysis against PBS.
Conjugation:	Unconjugated
Storage:	Store the antibody undiluted at 2-8°C for one month or (in aliquots) at -20°C for longer. Avoid repeated freezing and thawing.
Stability:	Shelf life: one year from despatch.
Database Link:	Q62217
Background:	Members of the semaphorin protein family, such as SEMA5A, are involved in axonal guidance during neural development.
Synonyms:	Semaphorin-5A, Semaphorin-F, Sema F, SEMAF
Note:	Molecular weight: 120321 Da



[View online »](#)

Product images:

Western blot analysis of anti-Semaphorin 5A Pab (C-term) (Cat.#AP12325PU-N) in mouse brain tissue lysates (35ug/lane). Semaphorin 5A (arrow) was detected using the purified Pab (1:60 dilution).