

## Product datasheet for **AP12324PU-N**

### Semaphorin 5A (SEMA5A) (N-term) Rabbit Polyclonal Antibody

#### Product data:

Product Type:	Primary Antibodies
Applications:	WB
Recommended Dilution:	<b>Peptide ELISA:</b> 1/1,000. <b>Western blot:</b> 1/1000.
Reactivity:	Human
Host:	Rabbit
Isotype:	Ig
Clonality:	Polyclonal
Immunogen:	KLH conjugated synthetic peptide selected from the N-terminal region of Mouse Sema5a.
Specificity:	This antibody detects Sema5a (N-term).
Formulation:	PBS State: Purified State: Liquid purified Ig fraction Preservative: 0.09% (W/V) Sodium Azide
Concentration:	lot specific
Purification:	Protein A Chromatography followed by peptide affinity purification
Conjugation:	Unconjugated
Storage:	Store undiluted at 2-8°C for one month or (in aliquots) at -20°C for longer. Avoid repeated freezing and thawing.
Stability:	Shelf life: one year from despatch.
Gene Name:	semaphorin 5A
Database Link:	<a href="#">Entrez Gene 9037 Human Q13591</a>



[View online »](#)

**Background:**

Bifunctional axonal guidance cue regulated by sulfated proteoglycans; attractive effects result from interactions with heparan sulfate proteoglycans (HSPGs), while the inhibitory effects depend on interactions with chondroitin sulfate proteoglycans (CSPGs) (By similarity). Ligand for receptor PLXNB3. In glioma cells, SEMA5A stimulation of PLXNB3 results in the disassembly of F-actin stress fibers, disruption of focal adhesions and cellular collapse as well as inhibition of cell migration and invasion through ARHGDI1-mediated inactivation of RAC1. May promote angiogenesis by increasing endothelial cell proliferation and migration and inhibiting apoptosis.

Members of the semaphorin protein family, such as SEMA5A, are involved in axonal guidance during neural development.

**Synonyms:**

Semaphorin-5A, Semaphorin-F, Sema F, SEMAF

**Note:**

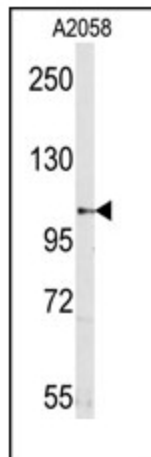
**Molecular weight:** 120321 Da

**Protein Families:**

Transmembrane

**Protein Pathways:**

Axon guidance

**Product images:**

Western blot analysis of anti-Sema5a (N-term) Pab in A2058 cell line lysates (35ug/lane). Sema5a (arrow) was detected using the purified Pab (1:60 dilution).