

Product datasheet for **AP12323PU-N**

Deaf1 (C-term) Rabbit Polyclonal Antibody

Product data:

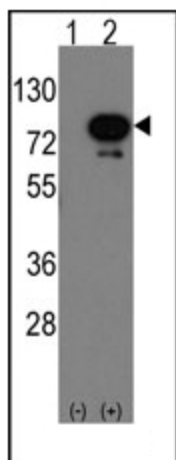
Product Type:	Primary Antibodies
Applications:	WB
Recommended Dilution:	ELISA: 1/1,000. Western blot: 1/50-1/100.
Reactivity:	Mouse
Host:	Rabbit
Isotype:	Ig
Clonality:	Polyclonal
Immunogen:	This antibody is generated from rabbits immunized with a KLH conjugated synthetic peptide selected from the C-terminal region of mouse DEAF1.
Specificity:	This antibody detects Deaf1 (C-term). Predicted to cross react with Mouse (100% Antigen Homology).
Formulation:	PBS with 0.09% (W/V) Sodium Azide as preservative. State: Aff - Purified State: Liquid purified Ig fraction.
Concentration:	lot specific
Purification:	Protein A Chromatography followed by peptide affinity purification.
Conjugation:	Unconjugated
Storage:	Store the antibody undiluted at 2-8°C for one month or (in aliquots) at -20°C for longer. Avoid repeated freezing and thawing.
Stability:	Shelf life: one year from despatch.
Gene Name:	deformed epidermal autoregulatory factor 1 (Drosophila)
Database Link:	Entrez Gene 54006 Mouse Q9Z1T5
Background:	Drosophila Deformed epidermal autoregulatory factor 1 (DEAF-1) is a DNA-binding protein that interacts with regulatory sequences first described in the Deformed epidermal autoregulatory element.
Synonyms:	SPN, ZMYND5, Suppressin, SPN, NU DR



[View online »](#)

Note: **Molecular weight:** 59633 Da

Product images:



Western blot analysis of Deaf1 (arrow) using rabbit polyclonal Deaf1 Antibody (Human C-term). 293 cell lysates (2 ug/lane) either nontransfected (Lane 1) or transiently transfected with the Deaf1 gene (Lane 2) (Origene Technologies).